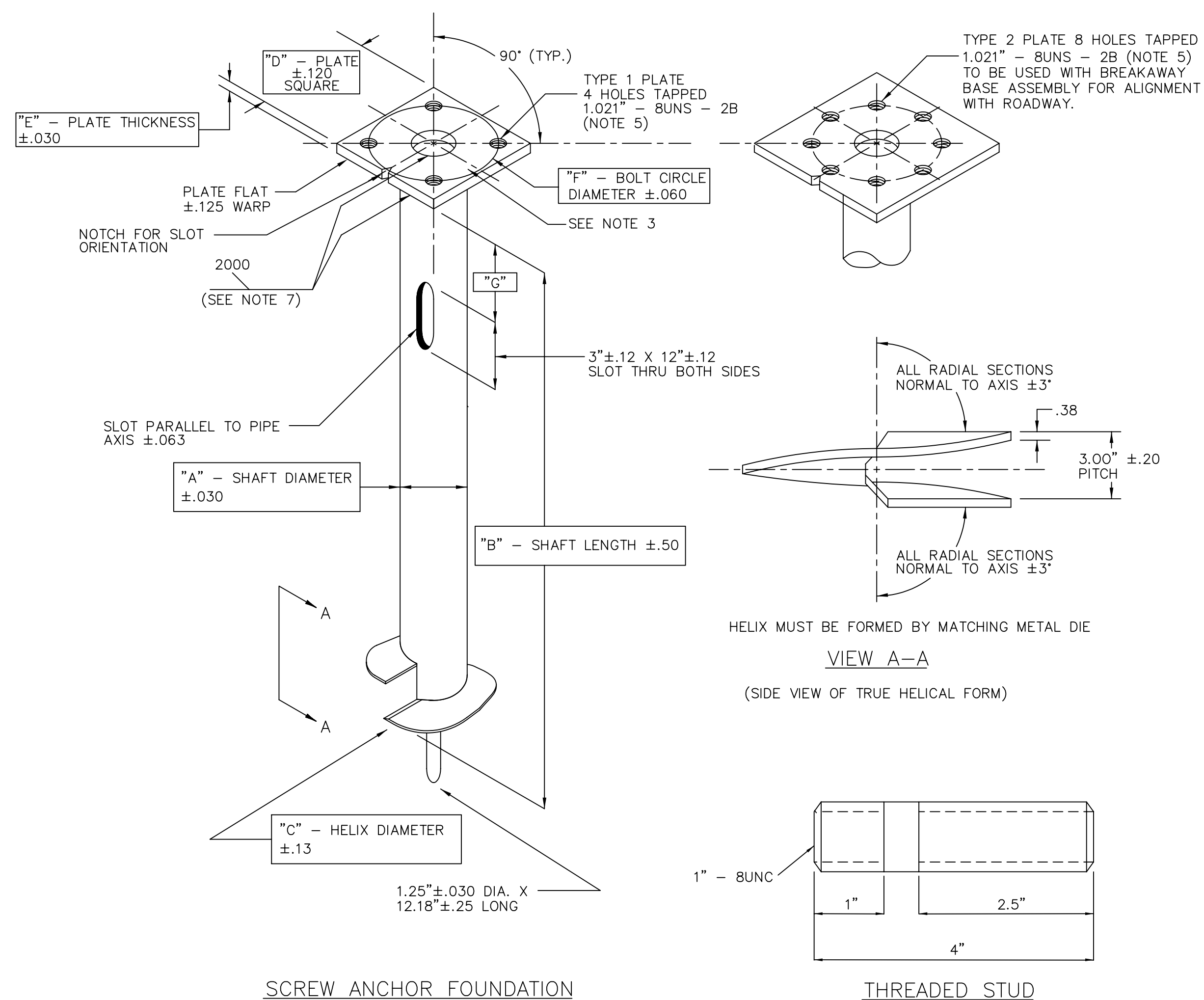


SCREW ANCHOR FOUNDATION DETAIL



SCREW ANCHOR FOUNDATION

THREADED STUD

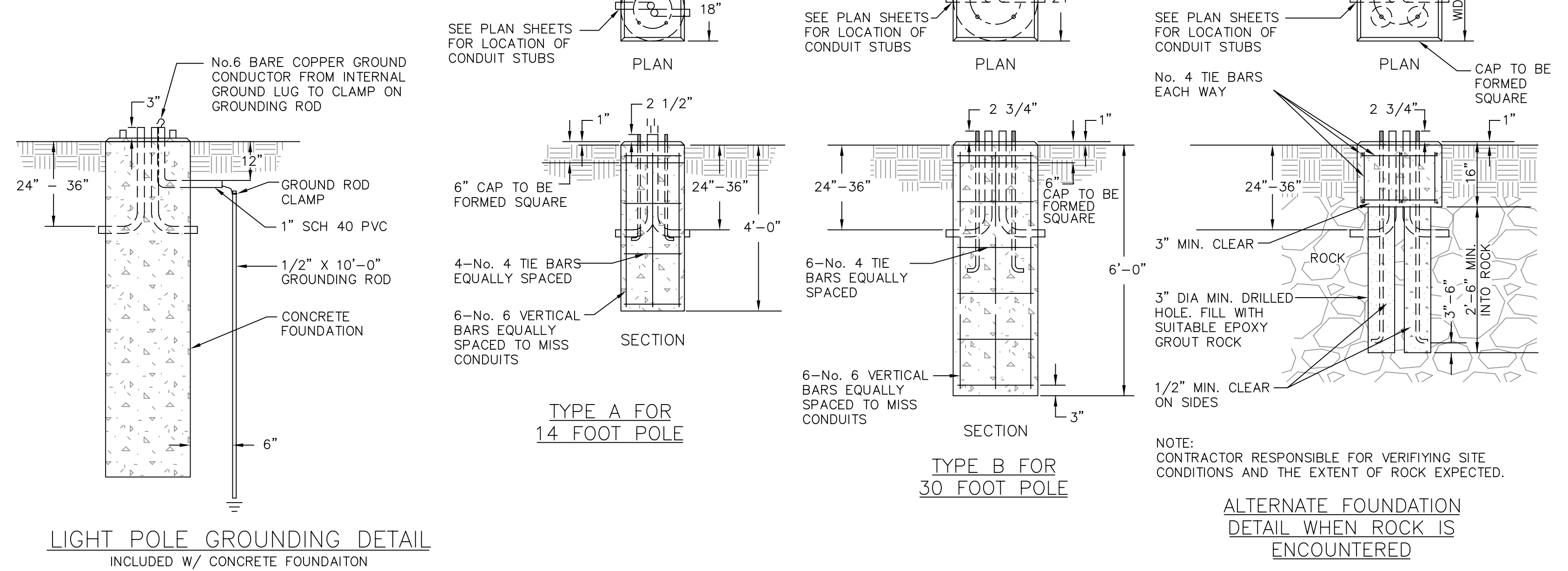
TYPE	POLE TYPE(S)	MAXIMUM TORQUE RATING (lb ft)	A SHAFT DIA.	B SHAFT LENGTH	C HELIX DIA.	D PLATE SIZE	E PLATE THICKNESS	F BOLT CIRCLE	G SLOT LOCATION
1	P140	15,000	6"	48"	12"	10"	0.75"	9.5"	12"
2	P301-P306	20,000	8"	60"	14"	14.5"	1.0"	11"	18"

SCREW ANCHOR FOUNDATION NOTES:

- FINISH TO BE HOT DIP GALVANIZE PER ASTM-A153 (LATEST REVISION).
- BASEPLATE TO BE PERPENDICULAR TO SHAFT AXIS (±1) AND HOLE AND CONCENTRIC (±.188 I.D. FIM) TO SHAFT AXIS.
- ALL BASES SHALL BE IDENTIFIED BY THE MANUFACTURER'S INITIALS AND THE ANCHOR TYPE (1,2 & 3) PERMANENTLY STAMP INTO THE TOP PLATE WITH 1/2" LETTERS. THE JULIAN DATE OF MANUFACTURE SHALL BE PERMANENTLY STAMPED IN 1/4" NUMERALS.
- PILOT POINT AND SHAFT AXES TO BE CONCENTRIC (±.125 FIM) AND IN LINE (±2).
- TAP 1" HOLES ON THE SPECIFIED BOLT CIRCLE PERPENDICULAR TO THE BASEPLATE. CLEAN AND CHASE THE THREADS AFTER HOT-DIP GALVANIZING SO THAT A BOLT MAY BE HAND INSTALLED.
- PREHEAT (ROOM TEMPERATURE 70°F), TUMBLEBLAST, HANDGRIND, AND CLEAN BASEPLATE, HELIX, AND CORE ON ALL WELD AREAS. FLAMECUT IRREGULARITIES PERMISSIBLE:
 - VALLEYS NOT TO EXCEED 3/32 IN. BELOW NOMINAL SURFACE LEVEL.
 - PEAKS OR POSITIVE IRREGULARITIES NOT TO EXCEED 1/32 IN. ABOVE NOMINAL SURFACE LEVEL OR INTERSECTIONS OF NOMINAL SURFACES.
- MANUFACTURER TO HAVE IN EFFECT INDUSTRY RECOGNIZED WRITTEN QUALITY CONTROL FOR ALL MATERIALS AND MANUFACTURING PROCESSES.
- ALL MATERIAL IS TO BE NEW, UNUSED AND MILL TRACEABLE MEETING THE FOLLOWING SPECIFICATIONS:
 - BASEPLATE: ASTM A36-(LATEST REVISION) HOT ROLLED STEEL PLATE
 - SHAFT: STEEL PIPE PILES, SEAMLESS OR STRAIGHT WELDED, GRADE 2 PER ASTM A252. ALTERNATE MATERIAL PIPE TYPE E OR S, GRADE B PER ASTM A53.
 - HELIX: ASTM A635-(LATEST REVISION) HOT ROLLED STEEL PLATE PILOT POINT: ASTM A575-(LATEST REVISION) HOT ROLLED STEEL AISI C 1045 HOT ROLLED STEEL. SPECIAL 1" DIAMETER HOT DIP GALVANIZED STUD THREADED AT BOTH ENDS.
 - STUD: STUD SHALL INCLUDE ONE HEX NUT AND ONE EACH LOCK AND FLAT WASHER FOR THE TYPE 1 SCREW ANCHOR FOUNDATION.
- ALL 30' ALUMINUM LIGHT POLES SHALL BE FURNISHED WITH PRECISION FORM PFI-200-1 BREAKAWAY COUPLING ASSEMBLIES.
- THE DESIGN AND PERFORMANCE INTEGRITY OF THE FOUNDATION SHALL BE VERIFIED BY FULL-SCALE TESTS BY QUALIFIED ENGINEERS INDEPENDENT OF THE MANUFACTURER. CERTIFIED TEST REPORTS SHALL BE PROVIDED UPON REQUEST.
- FLAME CUT NOTCH OR PROJECTION WILL BE ON BASE PLATE TO INDICATE SLOT ORIENTATION.
- WHEN ROCK IS ENCOUNTERED USE ALTERNATE CONCRETE FOUNDATION FOR ROCK. CONTRACTOR RESPONSIBLE FOR VERIFYING SITE CONDITIONS AND THE EXTENT OF ROCK EXPECTED.

CONCRETE FOUNDATION DETAILS

SEE TABLE 1 OF POLE AND ARM DETAILS FOR ANCHOR BOLT DIMENSIONS AND SPECIFICATIONS.



LIGHT POLE GROUNDING DETAIL

INCLUDED W/ CONCRETE FOUNDATION

ALTERNATE FOUNDATION DETAIL WHEN ROCK IS ENCOUNTERED

SUMMARY OF STREET LIGHTING QUANTITIES

ITEM	UNIT	QUANTITY
CONTROL CENTER - POLE MOUNTED	EACH	xxx
CONTROL CENTER - PAD MOUNTED	EACH	
CONTROL CENTER FOUNDATION	EACH	
CONTROL CENTER GROUND ROD	EACH	
PHOTO CELL (DELAY TYPE)	EACH	
14' ALUMINUM POLE	EACH	
20' ALUMINUM POLE	EACH	
30' ALUMINUM POLE (DESIGNATION xxx)	EACH	
30' ALUMINUM POLE (DESIGNATION xxx)	EACH	
30' ALUMINUM POLE (DESIGNATION xxx)	EACH	
30' ALUMINUM POLE (DESIGNATION xxx)	EACH	
40' ALUMINUM POLE (DESIGNATION xxx)	EACH	
40' ALUMINUM POLE (DESIGNATION xxx)	EACH	
CONCRETE FOUNDATION FOR 14' POLE	EACH	
CONCRETE FOUNDATION FOR 20' POLE	EACH	
CONCRETE FOUNDATION FOR 30' POLE	EACH	
CONCRETE FOUNDATION FOR 40' POLE	EACH	
TYPE 1 SCREW IN FOUNDATION	EACH	
TYPE 2 SCREW IN FOUNDATION	EACH	
TYPE 3 SCREW IN FOUNDATION	EACH	
COBRA HEAD LUMINAIRE 150 WATT H.P.S.	EACH	
COBRA HEAD LUMINAIRE 150 WATT H.P.S.	EACH	
COBRA HEAD LUMINAIRE 150 WATT H.P.S.	EACH	
COBRA HEAD LUMINAIRE 150 WATT H.P.S.	EACH	
POST TOP LUMINAIRE 150 WATT H.P.S.	EACH	
SHOE BOX LUMINAIRE 150 WATT H.P.S.	EACH	
TYPE I JUNCTION BOX	EACH	
TYPE II JUNCTION BOX	EACH	
SERVICE BOX	EACH	
2" HDPE CONDUIT	LN. FT.	
3" HDPE CONDUIT	LN. FT.	
2" PVC CONDUIT	LN. FT.	
3" PVC CONDUIT	LN. FT.	
(3) DISTRIBUTION CABLE - 1c No. 4 TYPE USE *	LN. FT.	
POLE & BRACKET CABLE - 2c No.12 AWG	LN. FT.	
MULTIPLE TAP STREET LIGHT CONNECTOR	EACH	
CONNECTOR KIT, FUSED	EACH	
CONNECTOR KIT, UNFUSED	EACH	

* FOR TOTAL LINEAL FOOTAGE OF 1c No. 4, MULTIPLY THIS QUANTITY BY 3

NOTE:
THE QUANTITIES ARE PROVIDED SOLELY FOR THE CONTRACTOR'S CONVENIENCE AND ARE NOT GUARANTEED TO BE A COMPLETE LIST OF THE MATERIALS FOR THE PROJECT.

DATE	REVISION	BY	APPR
STREET LIGHTING INSTALLATION POLE FOUNDATION DETAILS AND QUANTITIES			
PROJECT			
PUBLIC WORKS - ENGINEERING			
PROJ. NO.	XX-XXXX		
DATE	XX-XX-XXXX	SLDETAIL04.DWG	02 JAN 02
DESIGNED	XXX	DETAIL 4 of 4	
DESIGN CK	XXX		
DETAILED	XXX		
DETAIL CK	XXX	SHEET X OF XX	

