

Vicinity Map

PROJECT AREA
 Site Area: 3.00 Acres gross
 2.74 Acres net

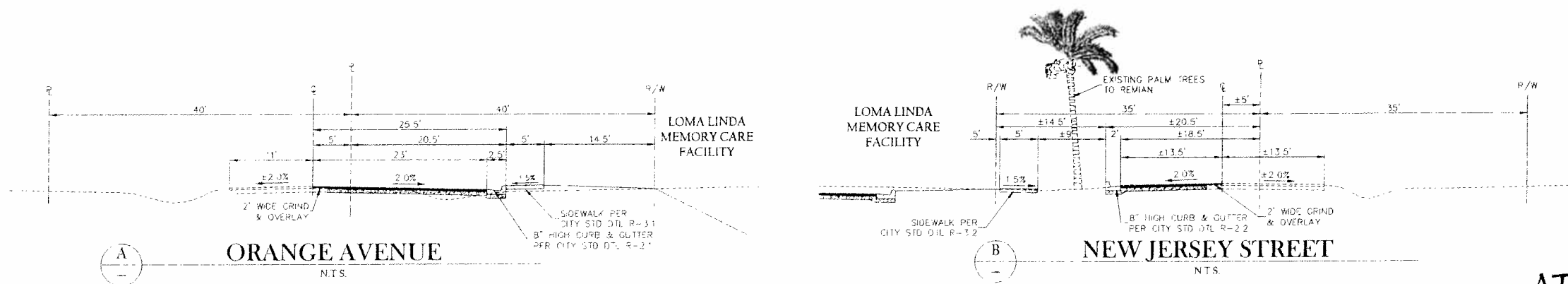
PROJECT AREA SUMMARY:

Site Area:	119,385 Sq Ft	100.0%
Building Footprint:	37,873 Sq Ft	31.7%
Parking / Drives:	27,892 Sq Ft	23.5%
Walks / Patios:	13,074 Sq Ft	10.9%
Landscape / Openspace:	40,546 Sq Ft	33.9%

ZONING:
 Existing Zoning - R-3
 Proposed Zoning - Institutional
 Construction Type - V-1 hour

PARKING:
 ACCESSIBLE SPACES: 4
 OPEN SPACES: 37
 TOTAL SPACES PROVIDED: 41

- GENERAL NOTES:**
- REFER TO LANDSCAPE PLAN FOR ALL PEDESTRIAN WALKS AND PLANTING.
 - REFER TO GRADING PLAN FOR FINISH GRADES.
 - REFER TO SITE DRAINAGE & UTILITY PLAN FOR SITE DRAINAGE AND UTILITY INFORMATION.
 - SITE PAVEMENT TO BE EITHER PORTLAND CEMENT CONCRETE OR ASPHALTIC CONCRETE (CONTRACTOR'S OPTION). PAVEMENT DESIGN AS PER SOils REPORT FOR TYPICAL CONCRETE JOINT LAYOUT - SEE DETAILS 4/A/1 & 5/A/1.
 - PROVIDE WATER SUPPLY TO THE TRASH ENCLOSURE AREA.
 - FOR CONTROL POINTS SEE REFERENCE PLANS.
 - CONCRETE AT EXTERIOR DOORS SHALL NOT EXCEED 1/4" PER FOOT MAXIMUM SLOPE.
 - SITE CONTRACTOR TO COORDINATE ALL SLOPES AND CROSS SLOPES OF EXTERIOR WALKS WITH CIVIL ENGINEER PRIOR TO CONSTRUCTION.



Daniel Roach architect
 471 High Street, SE, Suite 10, Salem, Oregon 97301
 P: 503.398.1990 F: 503.398.0565 www.danielroach.com

JEA SENIOR LIVING
 Management • Development
 Loma Linda, California

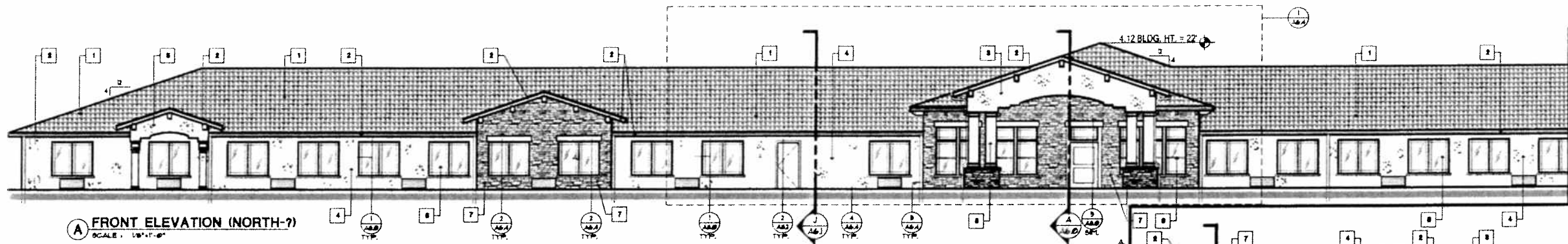
Loma Linda
MEMORY CARE FACILITY
 Loma Linda, California

SITE PLAN

DATE: 3/19/2012
 REVISED DATE:

SHEET
A
1.1

SITE PLAN
 SCALE: 1/8" = 1'-0"
ATTACHMENT-B



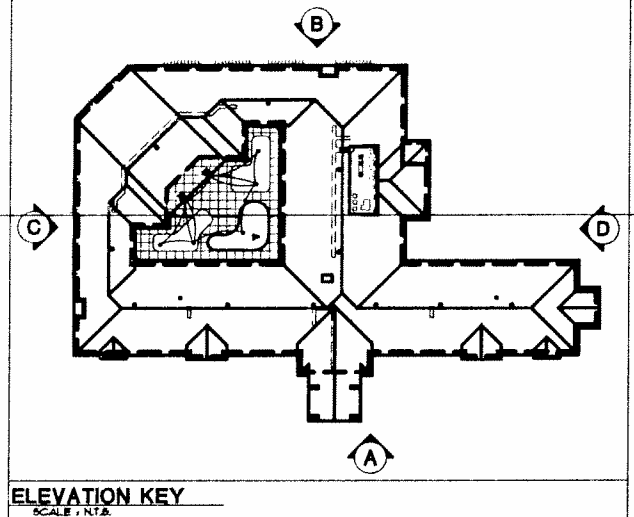
A FRONT ELEVATION (NORTH-?)
SCALE: 1/8"=1'-0"

NOTE:
STUCCO SYSTEM TO BE USED IS A STANDARD 3 COAT SYSTEM OVER METAL LATH AS DEFINED IN SECTION 2512 OF THE 2008 IBC

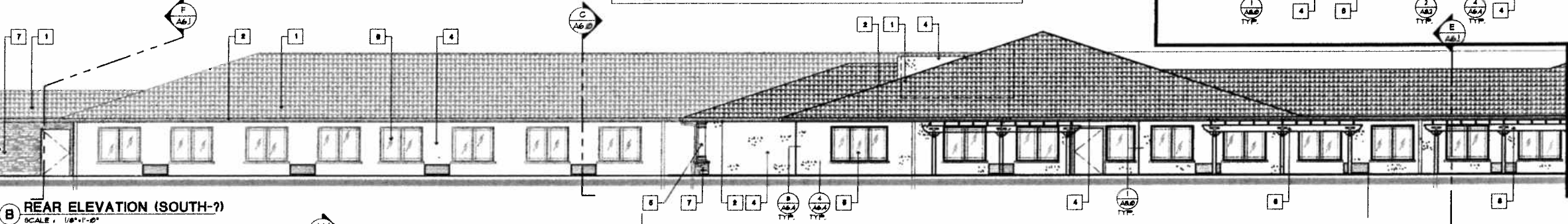
NOTE:
WRAP ENTIRE EXTERIOR OF BUILDING WITH JUMBO TEX (BY FORTIFIBER BUILDING SYSTEMS) ALL JOINTS TO BE TAPED WITH FORTIFIBER SHEATHING TAPE. SYSTEM MUST BE INSTALLED IN ACCORDANCE WITH MANUF. INSTALLATION INSTRUCTIONS TO PROVIDE 10 YR WARRANTY TO GENERAL CONTRACTOR

KEY NOTE & COLORS

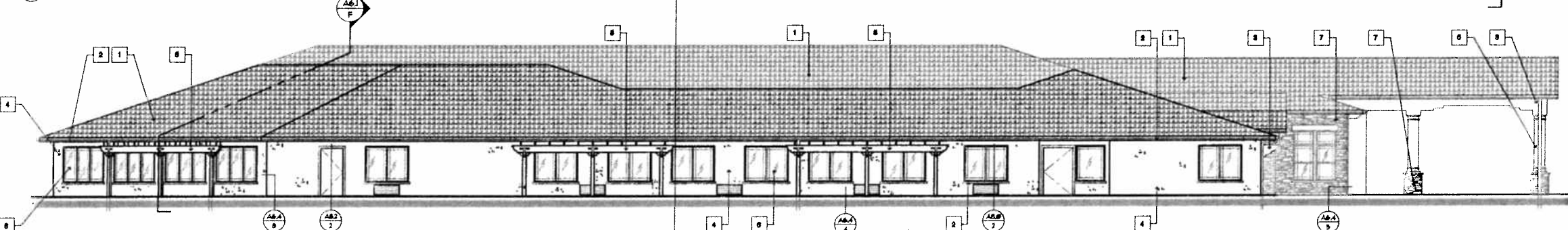
1	MONIER LIFETILE (MISSION 6 - SALERNO CLAY)
2	SHERWIN WILLIAMS TRIP (TREE BRANCH)
3	SHERWIN WILLIAMS STUCCO (THRESHOLD TAUPE)
4	SHERWIN WILLIAMS STUCCO (FRESCO CREAM)
5	SHERWIN WILLIAMS COLUMN (THRESHOLD TAUPE)
6	VINYL FRAMED INSULATED WINDOW (WITH COLOR MILGARD TAN)
7	CORCHADO STONE (TUSCAN VILLA - FLORENTINE) STONE
8	CEDAR WOOD TRELLIS



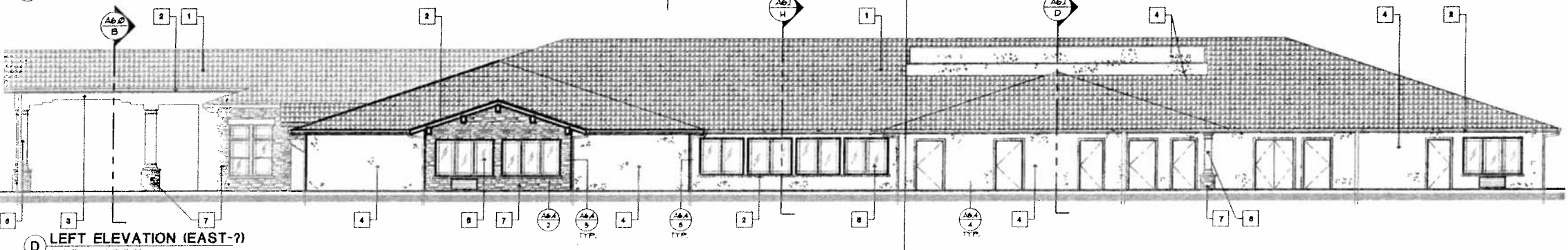
ELEVATION KEY
SCALE: N/A



B REAR ELEVATION (SOUTH-?)
SCALE: 1/8"=1'-0"



C RIGHT ELEVATION (WEST-?)
SCALE: 1/8"=1'-0"



D LEFT ELEVATION (EAST-?)
SCALE: 1/8"=1'-0"

Daniel Roach Architect
47149th Street SE, Suite 100, Issaquah, Oregon 97027
P: 503.288.3200 F: 503.288.3201 W: danielroach.com

JEA SENIOR LIVING
Management • Development

Loma Linda MEMORY CARE FACILITY
Loma Linda, California

EXTERIOR BUILDING ELEVATIONS

DATE: 3/19/2012

REVISED DATE:

SHEET
A
6.3a

1/20/2012 2:15:10 PM user: jrd 3/22/2012 2:24 PM Project Name: JEA Senior Living Memory Care Facility - Issaquah, Oregon