



# Residential Sustainability Report

Service Period: July 2022

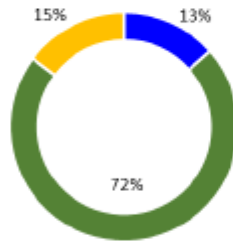
July Diversion Rate: 28%



LOS ALAMOS

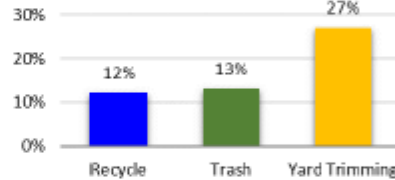
The diversion rate is the percent of recyclable and compostable material diverted from the landfill.

## Monthly Collection Report



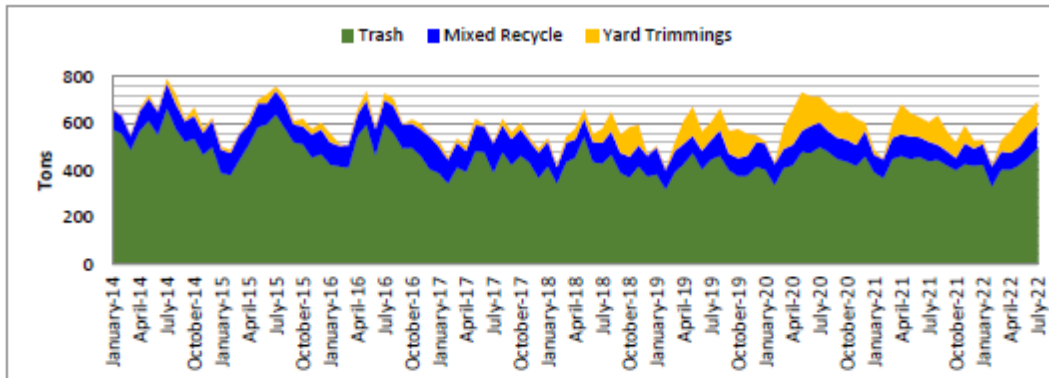
■ Mixed Recycle ■ Trash ■ Yard Trimmings

## % Change Previous Year

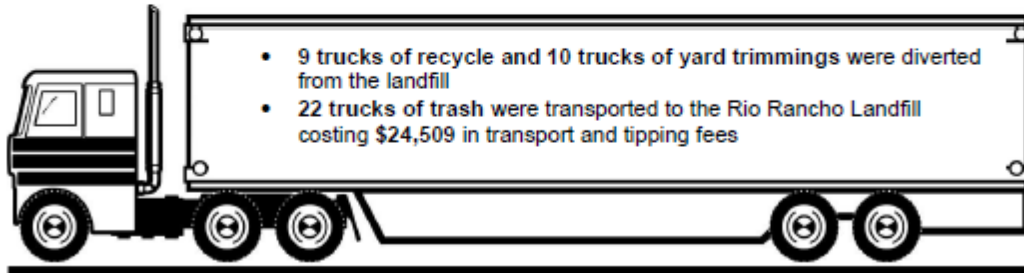


	Jul-21	Jul-22
Yard Trimming	80.98	102.84
Recycle	83.59	93.83
Trash	440.28	497.50

In July by recycling and composting Los Alamos County reduced GHG emissions by ~524 tons



In 2022 by recycling and composting Los Alamos County reduced GHG emissions by ~2,963 tons



For more information contact Environmental Services Division at 505.662.8163 or email [solidwaste@lacnm.us](mailto:solidwaste@lacnm.us)