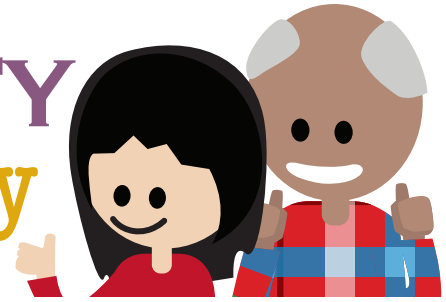




WRAPAROUND

# FIDELITY and Quality



## WRAPAROUND FIDELITY

Principles

Practice

Facilitation Activities

Short, intermediate  
and long-term outcomes



1

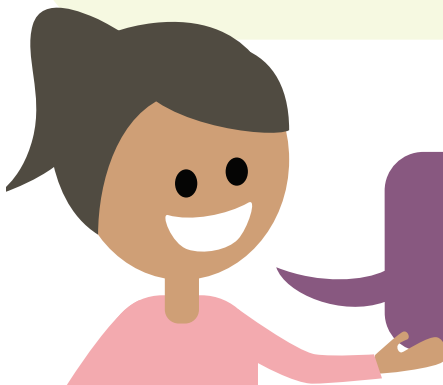
### GUIDING PRINCIPLES

1. Family-Driven and Youth-Guided (NWI: Family Voice and Choice)
2. Strengths-Based
3. Natural Supports
4. Individualized
5. Culturally and Linguistically Responsive (NWI: Culturally Competent)
6. Team-Based
7. Community-Based
8. Collaboration
9. Persistence
10. Outcome-Based

### FACILITATION ACTIVITIES

2

1. Introductions
2. Ground rules
3. Family vision
4. Team mission
5. Strengths/successes
6. Needs
7. Prioritize needs
8. Outcomes
9. Brainstorm strategies
10. Assign action steps
11. Agree and summarize plan
12. Schedule next wraparound youth and family team meeting



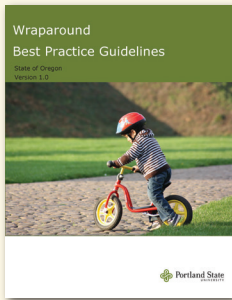
Fidelity is assessed by 1) using the Wraparound Fidelity Index-EZ (WFI-EZ) measure with teams and 2) the Team Observation Measure (TOM) while observing Wraparound Care Coordinators.

# HIGH QUALITY WRAPAROUND

## 3

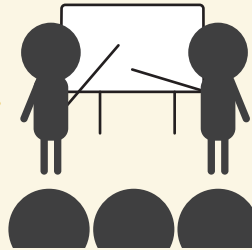
### ORGANIZATIONAL AND SYSTEM SUPPORTS

1.



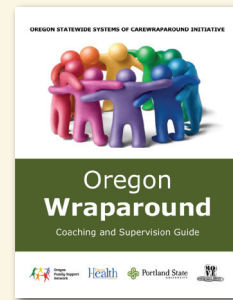
Oregon Best Practice Guidelines

2.



Intensive Wraparound Foundation Training and other trainings

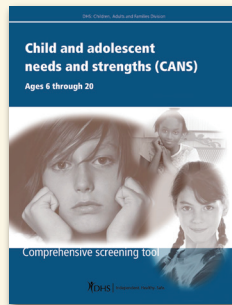
3.



Oregon Wraparound coaching and supervision training and tools

- Recommended leadership and administrative oversight
- Recommended roles and terminology
- Recommended team functioning and facilitation of wraparound
- Recommended quality, fidelity and evaluation

4.



Assessment tools, including Oregon Best Practice Assessment, CANS and TCOM

5.



Technical assistance, including "peer-delivered" services training

“

[M]easuring whether wraparound is being implemented 'as intended' will require, at a minimum, assessing **1 adherence to the principles of wraparound,** **2 whether the basic activities of facilitating a wraparound process are occurring,** and **3 supports at the organizational and system level.**" (Bruns, 2008)

”