



# CLEAN & GREEN 2023

*Working together for a brighter future*



YOUR ONE STOP FOR SERVICE

Receiving service from  
the city of Glendale is now  
as easy as 1-2-3!



1. Simply go to [www.GlendaleOne.com](http://www.GlendaleOne.com) or download the GlendaleOne mobile app from the App Store or Google Play.
2. Give us the location where service is needed, select the type of service needed, and opt-in for automatic updates or create an account (optional).
3. Submit your request and receive a confirmation number that includes the expected turnaround time for the issue.

GlendaleOne is easy to use, increases accessibility to city services, and improves service delivery and communication city-wide.

**Key features include:** Automatic escalation to a supervisor if there is a delay, knowledge base of frequently asked questions, automatic location identification and map integration and the ability to include photos or other documents with your service request.

*Outstanding service is our priority, and GlendaleOne demonstrates our commitment to deliver excellence and innovation as we strive to make Glendale the community of choice for residents, businesses and employees.*



# HOUSEHOLD HAZARDOUS WASTE DISPOSAL

## Common household hazardous items include:

Antifreeze and automotive products, including car batteries, oil & filters • Flammables • Mercury • Oil-based paint  
Pesticides • Pool chemicals • Propane tanks • Paint, oil, gasoline, antifreeze & other automotive liquids (20-gallon limit)

## Spring & Fall Pick-ups

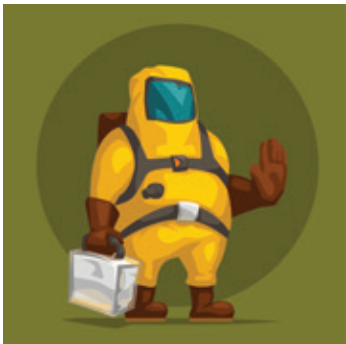
Many household products contain hazardous ingredients that can be harmful when used or discarded incorrectly. Glendale solid waste workers will come to you and make sure these items are properly disposed of.

## Options for Household Hazardous Waste Disposal Year-round

Many items received during household hazardous waste collection service are recyclable at local stores. Compact fluorescent bulbs (CFLs), lead-acid batteries (non-automotive), and NiCad and rechargeable batteries are all recycled as part of nationwide programs. Contact the store where the items were purchased or call the service desk of a local store to find out where you can drop off these items.

## Freon Notice

For appliances with Freon units such as refrigerators, freezers, water coolers, and window-mounted air conditioners, a \$20 fee will be added to your water bill (fee added for each Freon unit). This service requires a special pickup request which can be scheduled by calling 623-930-2660.



## Pick-up Process & Schedules:

Twice a year, residents may schedule appointments to have hazardous waste picked up. The process is as simple as 1, 2, 3!

1. During the appointment dates listed below, schedule a pickup and have a list ready of the items you have for disposal.
2. Place the items out for collection on the scheduled pickup day by 6 a.m.
3. The material is removed on your scheduled day and disposed of safely.

Mark your calendar for the dates listed below to be sure to clear your house of unwanted toxic and hazardous materials.

Call 623-930-2660 to make your appointment.  
[www.glendaleaz.com/householdhazardouswaste](http://www.glendaleaz.com/householdhazardouswaste)

## 2023 Household Hazardous Waste Schedule

### Spring

Appointments: February 23 – March 17  
Collections: March 13 – March 31

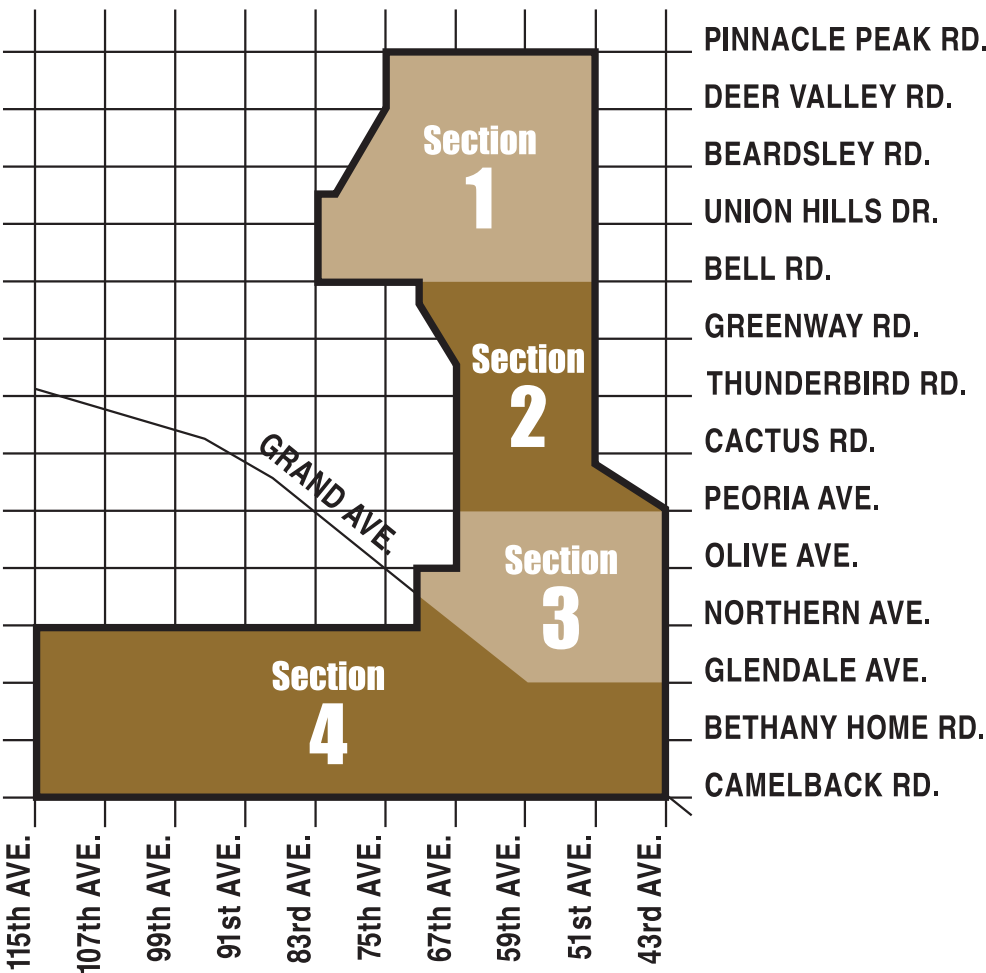
### Fall

Appointments: September 18 – October 6  
Collections: October 9 – October 27

# 2023 BULK TRASH PICKUP SCHEDULE

## Bulk Trash is Picking Up!

As a Glendale resident, you receive once a month bulk trash pickup service. Please follow the established bulk trash placement schedule as this will assist in keeping the operational costs down and the collection service timely.



### SECTION 1

January	2-6
February	6-10
March	6-10
April	3-7
May	1-5
June	5-9
July	3-7
August	7-11
September	4-8
October	2-6
November	6-10
December	4-8

### SECTION 2

January	9-13
February	13-17
March	13-17
April	10-14
May	8-12
June	12-16
July	10-14
August	14-18
September	11-15
October	9-13
November	13-17
December	11-15

### SECTION 3

January	16-20
February	20-24
March	20-24
April	17-21
May	15-19
June	19-23
July	17-21
August	21-25
September	18-22
October	16-20
November	20-24
December	18-22

### SECTION 4

January	23-27
February	27 - March 3
March	27-31
April	24-28
May	22-26
June	26-30
July	24-28
August	28 - September 1
September	25-29
October	23-27
November	27 - December 1
December	25-29

# RECYCLING IN GLENDALE, AZ



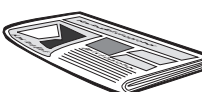
**ALUMINUM CANS:** beverage or energy drink cans



**CARDBOARD:** empty of all packing materials and broken down



**MIXED PAPER:** junk mail, catalogs, brown paper bags, shredded paper in a clear plastic bag

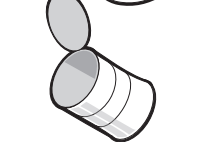


**NEWSPAPER:** including inserts



**ALL PLASTIC CONTAINERS THAT CARRY RECYCLING SYMBOLS 1 & 2:**

milk jugs, soda bottles, water bottles  
**No styrofoam, plastic bags, bubble wrap or plastic toys.**



**STEEL/TIN:** soup or vegetable cans

**Glendale Recycling**  
When in doubt, throw it out!



623-930-2660  
[GlendaleAZ.com/Recycling](http://GlendaleAZ.com/Recycling)

## Recyclables Need to be Clean, Dry and Empty.

After finishing with a recyclable item, rinse as necessary to remove any food. There is no need to remove caps or labels, but do remove non-recyclable items like plastic cereal box inserts. Cardboard needs to be empty of all packing materials and broken down.

All recyclables must be relatively clean, empty and dry. This does not mean putting them through a dishwasher. This is especially important during our current drought period. An example of relatively clean, empty and dry would be a mayonnaise jar that has been wiped clean of residue with a spatula or emptying a soda bottle in the sink. Both of those are clean and dry enough.

There are many polymers of plastic. The plastic industry uses a numbering system that you can find on the bottom of most plastic bottles and containers. Glendale recycles and accepts those with the symbol 1 and 2. Plastic that contains Styrofoam (cups, egg cartons, packing materials and containers) are not recycled in Glendale's recycling program. All of these do not have ready markets and are not economical to sort and recycle.

### ITEMS NOT ACCEPTED

- Carpeting and clothing
- Diapers
- Dog and cat food bags
- Drywall
- Fast food items - straws, cups and wrappers
- Furnace filters
- Glass (of any kind)
- Hangers - no metal or plastic (of any kind)
- Household garbage (such as paper plates, bathroom items, dog waste, paper towels and napkins)
- Landscaping (leaves, grass, tree limbs, dirt and rocks)
- Non-container plastic (examples are plastic spoons, forks or knives, PVC pipe, bubble wrap and motor oil containers)
- Plastic bags (except for shredded paper placed in a clear plastic bag)
- Scrap metal
- Shoes
- Styrofoam
- Tile
- Toys



Scan for updated  
recycling information



# RECICLANDO EN GLENDALE, AZ



**LATAS DE ALUMINIO:** latas de bebidas o de bebidas energéticas



**CARTÓN:** recortado y vacío de todo material de empaque



**PAPEL MIXTO:** correo inservible, catálogos, bolsas de papel estraza, papel triturado en bolsas de plástico transparente

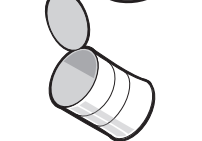


**PERIÓDICO:** incluyendo los insertos



**TODOS LOS CONTENEDORES DE PLÁSTICO CON LOS SÍMBOLOS DE RECICLAJE 1 Y 2:**

botellones de leche, botellas de refrescos, botellas de agua  
**No se permite espuma de poliestireno, bolsas de plástico, envoltura de burbujas o juguetes de plástico.**



**ACERO/HOJALATA:** latas de sopa o de vegetales

**Reciclaje de Glendale**  
Si tiene duda, ¡tírelo a la basura!



623-930-2660  
[GlendaleAZ.com/Recycling](http://GlendaleAZ.com/Recycling)

## Los artículos reciclables deben estar limpios, secos y vacíos.

Después de terminar con un artículo reciclable, enjuáguelo como sea necesario para eliminar cualquier alimento restante. No tiene que remover las tapas o las etiquetas, pero sí debe remover los artículos que no sean reciclables tales como los insertos de plástico en las cajas de cereal. El cartón debe recortarse y estar vacío de todos los materiales de empaque.


Todos los materiales reciclables deben estar relativamente limpios, vacíos y secos. Esto no significa que debe lavarlos en la lavavajillas. Esto es especialmente importante durante nuestro período actual de sequía. Un ejemplo de artículos relativamente limpios, vacíos y secos sería un frasco de mayonesa al que se le han quitado los residuos con una espátula, o una botella de refresco que se haya vaciado completamente en el fregadero. Ambos artículos están limpios y lo suficientemente secos.

Hay muchos polímeros de plástico. La industria del plástico usa un sistema de numeración que se puede encontrar en la parte inferior de la mayoría de las botellas y de los recipientes de plástico. Glendale recicla y acepta aquellos con los símbolos 1 y 2. Los artículos de plástico que contienen espuma de poliestireno, tales como vasos, cajas de huevos, materiales de empaque y contenedores no se reciclan en el Programa de Reciclaje de Glendale. Todos éstos no cuentan con mercados listos y no es económico separarlos y reciclarlos.

### ARTÍCULOS QUE NO SON ACEPTADOS

- Alfombras y ropa
- Pañales
- Bolsas de comida para perros y gatos
- Tablarroca
- Artículos de comida rápida — popotes, vasos y envoltorios
- Filtros de la calefacción
- Vidrio (de cualquier tipo)
- Ganchos — que no sean de metal o de plástico
- Basura doméstica (como platos de papel, artículos de baño, desechos de perros, toallas de papel y servilletas)
- Desechos de jardinería (hojas, pasto, ramas de árboles, tierra y rocas)
- Plástico que no sea de contenedores (por ejemplo, cucharas, tenedores o cuchillos de plástico, tubos de PVC, envoltura de burbujas y contenedores de aceite de motor)
- Bolsas de plástico (excepto para el papel triturado que se coloque en una bolsa de plástico transparente)
- Metal chatarra
- Zapatos
- Espuma de poliestireno
- Azulejo
- Juguetes



<div>  <h1>LANDSCAPE WATERING GUIDELINES</h1> </div>		Seasonal Frequency — Days Between Waterings				Water This Deeply (Typical Root Depth)
		Spring Mar - May	Summer May - Oct	Fall Oct - Dec	Winter Dec - Mar	
Trees	Desert adapted	14-30 days	7-21 days	14-30 days	30-60 days	24-36 inches
	High water use	7-12 days	7-10 days	7-12 days	14-30 days	24-36 inches
Shrubs	Desert adapted	14-30 days	7-21 days	14-30 days	30-45 days	18-24 inches
	High water use	7-10 days	5-7 days	7-10 days	10-14 days	18-24 inches
Groundcovers & Vines	Desert adapted	14-30 days	7-21 days	14-30 days	21-45 days	8-12 inches
	High water use	7-10 days	2-5 days	7-10 days	10-14 days	8-12 inches
Cacti and Succulents		21-45 days	14-30 days	21-45 days	if needed	8-12 inches
Annuals		3-7 days	2-5 days	3-7 days	5-10 days	8-12 inches
Warm Season Grass		4-14 days	3-6 days	6-21 days	15-30 days	6-10 inches
Cool Season Grass		3-7 days	none	3-10 days	7-14 days	6-10 inches
These guidelines are for established plants (1 year for shrubs, 3 years for trees). Additional water is needed for new plantings or unusually hot or dry weather. Less water is needed during cool or rainy weather. Drip run times are typically 2 hours or more for each watering.						

TOP THREE LANDSCAPE WATERING TIPS

1. **Adjust your irrigation timer/controller seasonally.** Plants have different watering requirements throughout the year. You don't want to drown or dehydrate your plants. Follow the Landscape Watering Guidelines.

2. **Water your plants deep and wide.** Remember the "1-2-3" rule for how deep to water your plants. Water groundcover, cacti, and annuals to the depth of 1 foot, shrubs to a depth of 2 feet, and trees to the depth of 3 feet. Water deeply, but infrequently to encourage deeper root growth and healthier plants.

3. **Inspect your irrigation system for leaks regularly.** Turn on each station (using your irrigation timer/controller) and walk your property looking for leaks in and around the different irrigation system components. Don't forget to check the valves, which are usually located in a plastic box, for leaks.



Is the Garbage Container Lid Always Open on Service Day?

Each single-family residence is assigned one garbage container and one recycling container. Typically, half of most household waste is recyclable, and the need for extra garbage capacity can be minimized or eliminated by recycling. The Maricopa County Department of Public Health requires lids to be closed at all times to control insect and rodent infestation.

Overfilled containers also create a service issue as debris can spill onto the ground and could prevent receiving service. Additional refuse containers can be requested by the resident for an additional **\$11.26 per container per month**.

If it Fits in the Bin, Toss it in!

The Bulk Trash Collection Program is for residents who pay for solid waste service. Help control service costs by utilizing your garbage container bin because collection equipment is outfitted to collect bulky items. It takes staff longer to collect smaller items so ***If it Fits in the Bin, Toss it in!***

For those occasions when you can't wait until your next scheduled collection day, you can take your items to the landfill for disposal. With your city utility water bill and driver's license to show you are a Glendale resident, you get up to a ton free once a month.(www.glendaleaz.com/landfill). You can also call for a bulk trash special pickup for a fee of **\$99** for the first 30 minutes of collection.

Appliances with Freon units such as refrigerators, freezers, water coolers and window-mounted air conditioners can be collected for a **\$20** fee per unit that will be added to your water bill. This service requires a special pick up request and is scheduled only during your bulk trash service week. Call 623-930-2660 to schedule a pickup.

For home remodels or cleanup projects, the city of Glendale has all your roll-off container needs competitively priced for your residential projects. Various rates are charged depending on the size of the bin and the number of services per month. To order any of the additional services offered by the city of Glendale Solid Waste Department, please call 623-930-2660.







Scan for updated recycling info



## Monthly Bulk Trash Service

Glendale provides bulk trash pickup for large items that **WILL NOT** fit in your residential garbage container. Unwanted furniture, appliances, tree limbs and brush from your property can be disposed of at this time.

**When:** Place bulk trash out no earlier than 6 a.m. on the Thursday before your scheduled service week and no later than 6 a.m. on the Monday of your scheduled service week. It is a violation of city ordinance to put bulk trash out before or after the assigned period. Residents who fail to follow guidelines will not receive bulk trash collection service until the following month and are required to remove their items from public view until the next scheduled service.

**Do’s:**

- Place all bulk trash within 4 feet of the sidewalk edge toward your home.
- Stack items as neatly as possible, parallel to the street adjacent to your property line.
- No object placed out for collection shall exceed 4 feet in length, except bulk trash (for example, a couch).
- Keep glass separate from other items, in sturdy cardboard boxes. Boxes should be 2ft. x 2ft. x 2ft. or smaller, taped shut and clearly labeled “glass.”
- Due to Freon, for refrigerator disposal there will be a \$20 fee added to your water bill per disposed refrigerator. Call 623-930-2660 to schedule a special pickup.

**Don’ts:**

- Do not put out any of the following items: soil, rock, gravel, concrete, shingles, bricks, blocks, drywall, tile, fiberglass, wet or dry mortar, sod, tree trunks, styrofoam, paint, oil, car batteries, pool chemicals or any other hazardous materials.
- Do not place bulk trash within 2 feet of city-owned containers, water meters, cable boxes, fire hydrants, block walls or other fixed objects.
- Tires must be taken to the Glendale Municipal Landfill.
- Do not pile bulk trash more than 6 feet high.
- Do not park vehicles within 10 feet of bulk trash piles.
- Do not put out styrofoam, including packing materials and foam peanuts.

**Bulk trash service will not be provided if a possible health or safety risk or chance of equipment or property damage exists.**

## MLK Day of Service Saturday, January 14

Throughout his life, Dr. Martin Luther King Jr. advocated for peace, unity and service. He was committed to creating change in his community and so are the many volunteers here in Glendale. MLK Day of Service is an annual tribute to the life of Dr. King and also a way to donate vitamin-rich citrus to families in need. In partnership with HandsOn Greater Phoenix and St. Mary’s Food Bank Alliance, we are looking for over 200 volunteers to help glean fruit. It also helps beautify a Glendale landmark, keeping this community perfect for living, working and playing! Sign up today at [www.glendaleaz.com/CommunityVolunteerProgram](http://www.glendaleaz.com/CommunityVolunteerProgram).

# JANUARY

## Clean & Green 2023

SUNDAY	MONDAY	TUESDAY	WEDNESDAY	THURSDAY	FRIDAY	SATURDAY
New Year’s Day	New Year’s Holiday City Offices Closed  No Solid Waste Collection					
1	2 Bulk Trash Section 1	3	4	5	6	7
8	9 Bulk Trash Section 2	10	11	12	13	MLK Day of Service Volunteer Project
15	Dr. Martin Luther King Jr. Day City Offices Closed  16 Bulk Trash Section 3	17	18	19	20	21
22	23 Bulk Trash Section 4	24	25	26	27	28
29	30 No Bulk Trash Service	31	1	2	3	4
5	6	7	8	9	10	11





## Recycle Right Wizard

### Right Stuff in the Right Bin

Contamination is a challenge all recycling programs battle daily. The digital tool, “Recycle Right Wizard,” allows residents to search a long list of items that will provide information on proper disposal (refuse or recycle bin). The Recycle Right Wizard is aimed at reducing contamination, reducing call volumes and diverting recyclable materials from the landfill. Test your recycling knowledge by going to [www.glendaleaz.com/recycling](http://www.glendaleaz.com/recycling).

## Household Hazardous Waste Appointments!

### Call between February 23 & March 17

Collections run from March 13- 31. Check your shed and garage for unwanted hazardous items. Place items in a box marked “HHW” with everything clearly labeled in the original container. Schedule appointments at 623-930-2660. For more information, visit [www.glendaleaz.com/householdhazardouswaste](http://www.glendaleaz.com/householdhazardouswaste).

## Play the Sorting Game!

Complete the game and print your own Certificate of Achievement! Go to [www.glendaleaz.com/recycling](http://www.glendaleaz.com/recycling) and play today!



# FEBRUARY

## Clean & Green 2023

SUNDAY	MONDAY	TUESDAY	WEDNESDAY	THURSDAY	FRIDAY	SATURDAY
29	30	31	1	2	3	4
5	6 Bulk Trash Section 1	7	8	9	10	11
Super Bowl LVII State Farm Stadium	13 Bulk Trash Section 2	14	15	16	17	Chocolate Affaire
Chocolate Affaire	Presidents' Day City Offices Closed	21	22	23	24	25
19	20 Bulk Trash Section 3	21	22	23	24	25
26	27 Bulk Trash Section 4	28	1	2	3	4
5	6	7	8	9	10	11

## Glendale Municipal Landfill

The city of Glendale Municipal Landfill is located at 11480 W. Glendale Avenue, on the north side of the road. The landfill is a responsible, progressive and an environmentally sound long-term solution to solid waste management, essential to the future health, welfare and prosperity of residents.

Solid Waste inspectors stay busy inspecting 90-gallon recycling containers placed out for service to decrease contamination in the recycling stream to keep processing fees as low as possible. If contamination is found, an inspector will leave educational materials. If the contamination is severe, a no service tag will be left explaining why service was not provided. An inspector also performs refuse container inspections looking for unbagged garbage and hazardous items such as paint, automotive oil and corrosive chemicals.

### Hours of Operation:

Monday – Friday: 7:30 a.m. - 4 p.m.

Saturday: 7 a.m. - 3 p.m.

Closed: Sundays & official city holidays

[www.glendaleaz.com/landfill](http://www.glendaleaz.com/landfill)



[www.glendaleone.com](http://www.glendaleone.com)





MARCH

Clean & Green  
2023

SUNDAY	MONDAY	TUESDAY	WEDNESDAY	THURSDAY	FRIDAY	SATURDAY
26	27	28	1	2	3	4 Folk & Heritage Festival
5 Folk & Heritage Festival	6 Bulk Trash Section 1	7	8	9	10	11 Glendale's Serve Day Volunteer Project
	EPA WaterSense Fix-A-Leak Week   www.epa.gov/watersense/fix-leak-week					
12	13 Bulk Trash Section 2	14	15	16	17	18
19	20 Bulk Trash Section 3	21	22	23	24	25
26	27 Bulk Trash Section 4	28	29	30	31	1
2	3	4	5	6	7	8

- How to Help Out  
with the Drought
- Arizona has been in a drought for more than 23 years. We all need to continue to do our part to use water wisely. We know that water is precious in the desert and that every drop counts. Water conservation makes sense in the Desert Southwest! Learn more at [www.glendaleaz.com/drought](http://www.glendaleaz.com/drought).
- Know Your Numbers. Read your monthly water bill and pay close attention to your water use. The average monthly water use for a single-family home in Glendale is 9,000 gallons. If you see a spike in water use, check for leaks.
  - Find and fix water leaks with the Smart Home Water Guide. [www.smarthomewaterguide.org](http://www.smarthomewaterguide.org)
  - Embrace the Sonoran Desert. Purchase desert-adapted plants that will survive and thrive in your yard. Receive a rebate for switching your grass to an Arizona-friendly landscape. [www.glendaleaz.com/waterconservation](http://www.glendaleaz.com/waterconservation)
  - Learn how to efficiently water your landscape. <https://bit.ly/WateringBytheNumbersFlipbook>
  - When shopping for a new dishwasher, clothes washer, faucet, showerhead, or toilet, select products with the EPA WaterSense logo. These water-efficient products can help your wallet and the environment. [www.epa.gov/watersense](http://www.epa.gov/watersense)
  - Remember to run your dishwasher and clothes washer on full loads.
  - Report landscape-related water waste at [www.glendaleone.com](http://www.glendaleone.com)
  - Check out 100+ water-saving tips from Arizona’s engaging Water-Use It Wisely campaign. [www.wateruseitwisely.com](http://www.wateruseitwisely.com)

Landscape Help for  
Businesses and HOAs

Landscape maintenance is often a large expense for businesses and HOAs. The Water Services Department offers free programs to help customers identify ways to save money and improve water efficiency. For more information, call 623-930-3596 or visit [www.glendaleaz.com/waterconservation](http://www.glendaleaz.com/waterconservation).

**Landscape Water Budget Program**  
Businesses and HOAs can receive a free landscape consultation and customized water budget that provides monthly watering targets based on landscape type and size.

**Landscape Rebate Program**  
Businesses and HOAs can receive a rebate for participating in the landscape water budget and converting non-functional grass to an Arizona-friendly landscape (bare soil does not qualify).

**Landscape Irrigation Technology Grant**  
Businesses and HOAs can receive up to a \$7,500 incentive for upgrading their irrigation system to improve water efficiency. Eligible upgrades include smart irrigation controllers, flow sensors and master valves for leak detection, and pressure regulating sprinkler, rotor, and drip irrigation equipment. Participants must install systems by July 2023 to qualify for available grant funds. For more information, call 623-930-3596 or visit [www.glendaleaz.com/waterconservation](http://www.glendaleaz.com/waterconservation).





Photo: Steve Stockmar

# APRIL

## Clean & Green 2023

SUNDAY	MONDAY	TUESDAY	WEDNESDAY	THURSDAY	FRIDAY	SATURDAY
26	27	28	29	30	31	1
2	3Bulk Trash Section 1	4	5	6	7	8
9	10Bulk Trash Section 2	11	12	13	14	15
16	17Bulk Trash Section 3	18	19	20	21	22Earth Day
23	24Bulk Trash Section 4	25	26	27	28Arbor Day	29
30	1	2	3	4	5	6

## Play a Part in Valley Bike Month

There’s no better time to enjoy the benefits of bicycling than in the Valley of the Sun’s perfect spring weather.

Valley Bike Month, which began in the late 1980’s as a single Bike to Work Day event, takes place in April. This event has expanded over the years as cities from all over the region have joined in, eventually becoming a month-long celebration of bicycling.

City of Glendale invites you to take advantage of the benefits of biking this April. Whether it’s a ride to work, a lunch break from your home office, or a weekend ride around the neighborhood with family or friends, get on your bike and go for a spin!

Bicycling is beneficial to both the environment and your health. It’s a great form of exercise, good for your physical and mental health, and a convenient mode of transportation that doesn’t pollute the environment or add to traffic congestion. It’s a win for everyone!

Valley Bike Month offers a variety of ways to participate, including the Bike Month Pledge, Team Challenges, and Share the Ride Contests. To learn more about Valley Bike Month events, go to <https://sharetheride.com>.

The city of Glendale also has its own bike event, the Glendale Family Bike Ride, which attracts cyclists from all over the valley. Every year, the event kicks off at Sahuaro Ranch Park and is open to riders of all skill levels, from young children to grandparents.

## North Glendale Park-and-Ride Project

A location for the new North Glendale Park-and-Ride (P&R) has been chosen, and the project is underway. The facility will be stationed at the Foothills Recreation & Aquatics Center (FRAC) located at 5600 W. Union Hills Dr. The P&R will utilize the west end of the parking lot and will include 131 covered parking spaces and a new bus pull-out located on Union Hills Dr. Look for the facility to open late summer, early fall.

## Valley Metro Fare Technology Modernization

Valley Metro is driving into the future with new automated technology where riders will be able to purchase fare on their mobile device or through a reloadable fare card and scan or tap that fare on new fare validators throughout the system. Both options will be an account-based system where riders can add funds, track transaction history, view account balances and more. The Mobile Fare launch is planned for some time in 2023.

## Microtransit Service

Glendale Transit recently launched their new Microtransit Service, called Glendale On-Board. Riders can reserve, pay for, and track their paratransit trip through Via’s app, which is free to download. Give it a try on your next trip!



[www.glendaleone.com](http://www.glendaleone.com)





# MAY *Clean & Green* 2023

SUNDAY	MONDAY	TUESDAY	WEDNESDAY	THURSDAY	FRIDAY	SATURDAY
30	1Bulk Trash Section 1	2	3	4	5	6
Drinking Water Week   www.awwa.org						
7	8Bulk Trash Section 2	9	10	11	12	13
National Public Gardens Week   www.publicgardens.org						
14	15Bulk Trash Section 3	16	17	18	19	20
21	22Bulk Trash Section 4	23	24	25	26	27
	Memorial Day City Offices Closed					
28	29No Bulk Trash Service	30	31	1	2	3
4	5	6	7	8	9	10

## Report Landscape Water Waste

Water is a precious resource and it’s important to use it wisely. If you observe landscape-related water waste, please take a photo and report it at [www.glendaleone.com](http://www.glendaleone.com) or call 623-930-3535.

## Understanding Your Monthly Sewer Charges

You may notice a change in the monthly sewer fee in your water bill each May. For most customers, this fee does not change. For some, the fee may decrease or increase. Every year the city of Glendale recalculates each customer’s sewer usage based on their water use billed January through March. If you are aware of high water use between January and March, you may be eligible for a fee adjustment and must submit a Sewer Appeal form. Access the form at [www.glendaleaz.com](http://www.glendaleaz.com) and type “Sewer Appeal” in the Search Function. Appeals are accepted up to 90 days after the May billing.

### Examples of typical sewer appeals:

- Leaks (January through March bills)
- Filling a new pool or draining and refilling an existing pool (January through March bills)
- Outdoor watering during the winter months, typically associated with larger than normal landscaping

New residents or customers who do not have a full 3 months’ winter water usage, will be assigned usage based on the average of all customers with a similar type of property. For more information, call 623-930-3190.

## What’s in Your Water?

Water is a vital resource for our desert community, and the quality of your drinking water is very important to us. The Glendale Water Services Department tests, analyzes, and monitors water quality many times each day to ensure that the water provided is clean and safe to use. Learn more at [www.glendaleaz.com/waterservices](http://www.glendaleaz.com/waterservices).

## Value in Every Drop

The Glendale Water Services Department provides essential services that protect public health and the environment. Every day, staff deliver high quality, reliable and affordable drinking water. On average, a gallon of Glendale tap water costs less than 1¢.

## Inspiration at the Xeriscape Garden

A community treasure, the Glendale Xeriscape Demonstration Garden is a living showcase of the diversity and abundance of water-wise plants. The garden is certified as a Wildlife Habitat and Monarch Waystation and is home to hummingbirds, butterflies, bees, and lizards. Wander through the garden’s themed areas to experience the beauty and diversity of desert-friendly landscapes. This award-winning garden is free to visit and open to the public from dawn to dusk.



/GlendaleAZGarden



[www.glendaleone.com](http://www.glendaleone.com)





JUNE

Clean & Green  
2023

SUNDAY	MONDAY	TUESDAY	WEDNESDAY	THURSDAY	FRIDAY	SATURDAY
28	29	30	31	1	2	3
4	5 <div>Bulk Trash Section 1</div>	6	7	8	9	10
11	12 <div>Bulk Trash Section 2</div>	13	14	15	16	17
18	19 <div>Bulk Trash Section 3</div>	20	21	22	23	24
25	26 <div>Bulk Trash Section 4</div>	27	28	29	30	1
2	3	4	5	6	7	8

Be Monsoon Ready!

The monsoon season officially runs from June 15 to September 30 as established by the National Weather Service.

Polluted stormwater runoff is the nation’s greatest threat to clean water. When it rains, stormwater flows over driveways, sidewalks, streets, and parking lots, where it picks up pollutants, such as trash, oil, vehicle brake dust, fertilizers, pesticides, and pet waste. These pollutants are transported to our rivers, washes, retention areas, and parks where they can have adverse effects on the environment and people.

What YOU can do to protect our local waterways:

- Clean rain gutters and direct downspouts away from paved surfaces.
- Sweep debris off driveways, sidewalks, and patios and dispose of it in the trash can.
- Pick up pet waste and dispose of it in the trash can.
- Minimize the use of pesticides, herbicides, and fertilizers and avoid the use of these chemicals before it rains.
- Per City Code: Keep irrigation water on your landscape, not the street.
- Per City Code: Only drain or backwash your pool water into the sanitary sewer, not the street.
- Schedule a household hazardous waste disposal pick-up with the Glendale Solid Waste Division at 623-930-2660. Never pour chemicals down the storm drain!

For more information, visit [www.glendaleaz.com/environmentalprotection](http://www.glendaleaz.com/environmentalprotection).

Keep Out of Retention Basins After Storm Events

Would you play in water containing pet waste, oil, pesticides, or trash? If you’ve played in a water-filled retention basin – you did. In Glendale, stormwater runoff does not go to a water treatment plant before it is released into the environment. It is transported by streets and storm drains directly to retention basins and washes. Retention basins are designed to retain standing water for several days, sometimes longer during an active monsoon. Don’t enter a retention basin when it has standing water.

Floodplain Insurance – Risk Rating 2.0 Equity in Action

It has been over 50 years since the Federal Emergency Management Agency (FEMA) has updated the way they assess flood policy pricing for those needing to purchase flood insurance; in Glendale, that is approximately 20 properties. FEMA updated the National Flood Insurance Program’s (NFIP) risk rating methodology called “Risk Rating 2.0.” This methodology leverages industry best practices and cutting-edge technology to enable FEMA to deliver rates that better reflect a property’s flood risk.

For questions about the Risk Rating 2.0 program and flood insurance pricing, talk to any insurance agent that is a flood risk insurance professional. If you need help finding a provider, visit [www.FloodSmart.gov](http://www.FloodSmart.gov) or call the NFIP at 877-336-2627.





JULY

Clean & Green  
2023

SUNDAY	MONDAY	TUESDAY	WEDNESDAY	THURSDAY	FRIDAY	SATURDAY
25	26	27	28	29	30	1
2	3 <div>Bulk Trash Section 1</div>	<div>Independence Day City Offices Closed</div> 4	5	6	7	8
9	10 <div>Bulk Trash Section 2</div>	11	12	13	14	15
16	17 <div>Bulk Trash Section 3</div>	18	19	20	21	22
23	24 <div>Bulk Trash Section 4</div>	25	26	27	28	29
30	31 <div>No Bulk Trash Service</div>	1	2	3	4	5

National Park &  
Recreation Month

The National Recreation and Parks Association has celebrated July as the official Parks and Recreation Month since 1985. This month is dedicated to the professionals and volunteers who have worked to advance opportunities for all to recreate and enjoy active neighborhood parks and facilities that enrich the quality of life.

You’re invited to experience the outstanding parks, recreation programs, facilities, and services that Glendale offers. For more information, visit [www.glendaleaz.com/parksandrec](http://www.glendaleaz.com/parksandrec).

Help Reduce Air Pollution

Ground-level ozone occurs in the summer months when emissions from vehicles and activities that use gasoline, paints, solvents, and other chemicals react in sunlight and heat to create ozone. To help reduce ozone you can take measures such as fueling your vehicle after dark, teleworking, and combining trips. For more information, visit [www.CleanAirMakeMore.com](http://www.CleanAirMakeMore.com).

Soak up the Rain

Pro Tip: If you receive at least ½” of rainfall, you can skip your next irrigation cycle. Simply use the off, stop, or rain setting on your controller to pause the watering cycle without disturbing your programs. Take it a step further by adding rainwater harvesting features to your landscape. Create wide and shallow depressions where water can be soaked up by plants or collect it in a rain barrel. For more information, visit <https://bit.ly/WUIWRainHarvesting>.

Cash for Removing Grass

Glendale water customers can receive a rebate for converting their water-thirsty grass lawns into desert-friendly landscapes. Save time, water, energy, and money by making the switch to a water-wise landscape.

**1. Get free “how-to” information.** Receive free publications on how to successfully convert grass to a water-smart landscape by calling 623-930-3760 or visiting [www.glendaleaz.com/waterconservation](http://www.glendaleaz.com/waterconservation).

**2. Request a free consultation.** Glendale Water Services Department – Conservation & Sustainable Living staff provide free landscape consultations to Glendale water customers. We offer advice to help you install and maintain a sustainable landscape.

**3. Learn about the landscape requirements.** Single-family customers must remove at least 500 square feet of grass. Businesses, HOAs, and multi-family customers must remove at least 1,000 square feet of grass and participate in the Landscape Water Budget Program. The converted area must be landscaped with Arizona-friendly plants (bare soil does not qualify).

**4. Call 623-930-3760 to schedule a landscape inspection.** After the inspection, landscapes that meet the criteria will receive a rebate dependent on the amount of grass converted.





AUGUST

Clean & Green  
2023

SUNDAY	MONDAY	TUESDAY	WEDNESDAY	THURSDAY	FRIDAY	SATURDAY
30	31	1	2	3	4	5
6	7 <div>Bulk Trash Section 1</div>	8	9	10	11	12
13	14 <div>Bulk Trash Section 2</div>	15	16	17	18	19
20	21 <div>Bulk Trash Section 3</div>	22	23	24	25	26
27	28 <div>Bulk Trash Section 4</div>	29	30	31	1	2
3	4	5	6	7	8	9

## Transit Services

Transit provides a wide range of convenient, low-cost transportation alternatives for Glendale citizens and visitors, including fixed-route bus service, Glendale Dial-A-Ride, Glendale Urban Shuttle (GUS) bus service, ADA service, a taxi voucher program and the new Microtransit, On-Demand Service, similar to Uber/Lyft.

For information about these services, call 623-930-2940. For valley-wide fixed route bus schedules and information on transit education programs visit [www.glendaleaz.com/PublicTransportation](http://www.glendaleaz.com/PublicTransportation).

## Adaptive Signal Control Technology (ASCT)

ASCT adjusts traffic signal timing to accommodate changing traffic patterns to alleviate congestion and improve safety. ASCT is currently being used on Bell Rd from 71st Ave to Loop 101.

This pilot project is a partnership between six valley agencies. A study conducted with data from before and after the implementation project confirms the benefits of the ASCT project. Delays have been reduced by 51%. This results in a reduction of vehicular pollutant emissions and savings in fuel consumption.

Two additional ASCT projects were recently completed: Bell Rd from 69th Ave to 53rd Ave and Olive Ave from 67th Ave to 47th Ave. The Glendale Sports and Entertainment District will also have ASCT installed before the Super Bowl.

## Pedestrian and Bicycling Connections

Walking and bicycling offer the most accessible, affordable, and healthiest forms of human transportation, and the city of Glendale is focused on making infrastructure improvements throughout the city to encourage walking and biking. Sidewalks provide a place for people to walk for transportation or recreational purposes and they are particularly important for providing independence to the mobility impaired or persons without access to a vehicle.

In addition to sidewalks, pedestrian facilities such as enhanced crossings, curb ramps, curb extensions, traffic calming features, and other improvements help create a more comfortable walking environment. For bicyclists, clearly marked facilities provide designated spaces that are, when feasible, separated from automobiles and pedestrians.

The City currently has multiple projects underway that will close 64 sidewalk gaps totaling almost 12 miles over the next few years, and construct nearly 6.5 miles of bicycle facilities. Strategically upgrading pedestrian connectivity and bicycle-specific infrastructure will enhance mobility for Glendale residents by better linking them to employment, shopping, and recreational opportunities.





## Bring the Internet Home from the Glendale Public Library

Does your home lack access to the internet? The library can help! Our Mobile Wi-Fi Hotspots provide a free high-speed internet connection with unlimited data for your Wi-Fi-accessible laptop, tablet, or phone anywhere T-Mobile coverage is available.

If you’re job hunting or pursuing higher education, then a Mobile Office to Go Kit is for you. In addition to a Mobile Wi-Fi Hotspot, this library kit contains a Chromebook and printer that you can use for free.

To check out a Hotspot or Kit for three weeks, you’ll need to be at least 18, show a photo ID and a Glendale Public Library card, and complete a check-out agreement at one of our Service Desks. Only one Hotspot or Kit per household at a time is allowed. Hotspots and Kits cannot be renewed and are subject to a late fine of \$1 per day. You’ll fill out a brief survey when you return one to a Service Desk at any of our locations. Hotspots and Kits cannot be returned via the book drops.

For more information, visit <https://bit.ly/gplhotspots> and <https://bit.ly/mobileofficetogo>.

## Green Living Classes On-Demand

The City has a collection of Green Living instructional videos on water-wise landscaping, vegetable gardening, energy efficiency, and more. Access these free resources on-demand at <https://bit.ly/GlendaleGreenVids>.

# SEPTEMBER *Clean & Green* 2023

SUNDAY	MONDAY	TUESDAY	WEDNESDAY	THURSDAY	FRIDAY	SATURDAY
27	28	29	30	31	1	2
3	Labor Day City Offices Closed 4 Bulk Trash Section 1	5	6	7	8	9
10	11 Bulk Trash Section 2	12	13	14	15	16
17	18 Bulk Trash Section 3	19	20	21	22	23
24	25 Bulk Trash Section 4	26	27	28	29	30
1	2	3	4	5	6	7

## Free Seeds for Your Vegetable Garden

Take home free seeds through the Glendale Seed Library, available at all four Glendale Public Library locations. Seeds are sourced from Native Seeds/SEARCH and provided by the Glendale Water Services Department – Conservation & Sustainable Living Division. For more information, visit <https://bit.ly/gplseeds>.

## Household Hazardous Waste Appointments!

Call between September 18 & October 6

Collections run from October 9- 27. Check your shed and garage for unwanted hazardous items. Place items in a box marked “HHW” with everything clearly labeled in the original container. Schedule appointments at 623-930-2660. For more information, visit [www.glendaleaz.com/householdhazardouswaste](http://www.glendaleaz.com/householdhazardouswaste).

## Monthly Landscape Watering Reminder

Text WHENTOWATER to 33222 to sign up for free monthly watering reminders. You will receive a text message on the first of each month with a link to that month’s unique landscape watering schedule.





Photo: Robert Torres

OCTOBER

Clean & Green  
2023

SUNDAY	MONDAY	TUESDAY	WEDNESDAY	THURSDAY	FRIDAY	SATURDAY
1	2Bulk Trash Section 1	3	4	5	6	7
8	9Bulk Trash Section 2	10	11	12	13	14
	National Teen Driver Safety Week					
15	16Bulk Trash Section 3	17	18	19	20	21
22	23Bulk Trash Section 4	24	25	26	27	28
		Halloween				
29	30No Bulk Trash Service	31	1	2	3	4
5	6	7	8	9	10	11

## National Teen Driver Safety Week

October 16-22, 2023 is National Teen Driver Safety Week. Motor vehicle crashes are the leading cause of death for teens (15-18 years old) in the United States. Distracted driving is one of the fastest-growing safety issues on the roads today. To address this concern, the city of Glendale has partnered with the National Safety Council and Glendale High Schools to teach young drivers how to take control of situations by taking personal responsibility for their own actions, attitudes and driving behaviors using the Alive at 25 training program.



/GlendaleAZTransportation



@glendaletransportation

## Be a Neat Neighbor

The mission of the Glendale Code Compliance Division is to maintain established community standards that preserve and promote the health, safety, and living environment of our community and neighborhoods. Please be a neat neighbor and keep grass and weeds cut to 6 inches or less in height as required by Glendale City Code. For more information, visit [www.glendaleaz.com/codecompliance](http://www.glendaleaz.com/codecompliance) or call 623-930-3610.

## Skip the Winter Lawn

Overseeding your lawn with winter ryegrass can use more than 8,000 gallons of water for every 1,000 square feet of grass. While Bermuda grass thrives in the summer heat, it will go dormant in the cooler months and transform into a golden hue. Skip overseeding and save money, time, and effort this fall. Learn more at <https://bit.ly/SkipOverseed>.

## Welcome Wildlife to Your Garden

Transform a patio or yard into an inviting Arizona wildlife-friendly space with Sonoran Desert plants. Creating a garden that attracts cheerful songbirds, colorful butterflies, or energetic hummingbirds requires imagination as well as the knowledge of how to provide food, water, shelter, and space for visitors to raise their offspring. Learn more at <https://bit.ly/WelcomeWildlifeGuide>.

## Don't Rush to Flush

**Don't flush unwanted medications down the toilet or sink.**

**Option 1** – Keep medication in its container (mark out personal information) and place it into a MedReturn Drug Collection Unit\* at the following Glendale police stations:

**Foothills Station - 6255 W. Union Hills Dr.**

**Gateway Station - 6261 N. 83rd Ave.**

*\*Does not accept liquid medications, syringes or inhalers.*

**Option 2** – Put medication into a sealable bag or container and mix with an undesirable substance (such as kitty litter or used coffee grounds). Dispose of it in the trash. Keep away from children and pets.

**Option 3** – Contact your pharmacy to see if they collect unused medications.





Photo: Maya Pazos

NOVEMBER

Clean & Green  
2023

SUNDAY	MONDAY	TUESDAY	WEDNESDAY	THURSDAY	FRIDAY	SATURDAY
29	30	31	1	2	3	4
					Veterans Day Holiday City Offices Closed	Veterans Day
5	6 Bulk Trash Section 1	7	8	9	10	11
			America Recycles Day			
12	13 Bulk Trash Section 2	14	15	16	17	18
				Thanksgiving Day City Offices Closed No Solid Waste Collection	Thanksgiving Holiday City Offices Closed	
19	20 Bulk Trash Section 3	21	22	23	24	25
26	27 Bulk Trash Section 4	28	29	30	1	2

Follow good waste disposal practices to prevent clogged pipes from disrupting your holiday plans.

Cease the Grease

Fats, oils, and grease (FOG) poured down your kitchen drain can solidify in your pipes and cause sewage to back up into your home, lawn, streets, and storm drains. FOG will eventually cool and harden in the pipe, which can lead to blockages.

Help prevent sewer blockages by following these best practices:

- Don't pour FOG down sinks, drains, or toilets.
- Pour used grease into a sealable container and discard it in the trash.
- Scrape food residue from dishes and cookware into the trash before washing.
- Put a strainer over the drain to catch food scraps and discard them in the trash.

Think Before You Flush

Your toilet and sink are not trashcans. Wipes, cotton balls, swabs, dental floss, wrappers, feminine hygiene products, and kitty litter all stick to the walls of underground pipes. These items do not dissolve and combine with FOG in the sewers to cause blockages.

Toilet paper is the only flushable product because it dissolves in water. There is no such thing as a “flushable wipe.” When cleaning wipes, facial wipes, and baby wipes are flushed, they can cause blockages, leading to sewer overflows. Help keep your pipes and the City’s sanitary sewer system clear of debris by disposing of items in the trash. For more information, visit [www.glendaleaz.com/environmentalprotection](http://www.glendaleaz.com/environmentalprotection).

Never put these items in the toilet or drain:

- Wipes — even if advertised as “flushable”
- Paper towels and napkins
- Personal hygiene products
- Diapers
- Needles should be disposed of in a medical sharps container or a puncture-proof container with a tight-fitting lid.

Glendale Collects  
Cell Phones for America  
Recycles Day

Time to clean out the drawers for those old cell phones! In celebration of America Recycles Day on November 15, Glendale has developed a special cell phone recycling program throughout November. The public is encouraged to drop off old cell phones at Desert Diamond Arena at Gate 3 on the northwest corner of the building, Glendale Community College, or at any of Glendale’s public libraries. The cell phones will go to the Glendale Family Advocacy Center to be refurbished and will become available for victims of stalking and domestic violence. Statistics show that cell phones are replaced after only 18 months of use. It is important to keep cell phones out of landfills. Drop off locations could change, so for updated information, visit [www.glendaleaz.com](http://www.glendaleaz.com) or call 623-930-2660.

THANKSGIVING

Christmas

New Year's Day

RESIDENTIAL  
SOLID WASTE  
COLLECTIONS  
HOLIDAYS

Solid Waste collection schedules are only affected on these three holidays. For more information, please consult this calendar or visit [www.glendaleaz.com/trash\\_holidayschedule](http://www.glendaleaz.com/trash_holidayschedule)





DECEMBER

Clean & Green  
2023

SUNDAY	MONDAY	TUESDAY	WEDNESDAY	THURSDAY	FRIDAY	SATURDAY
26	27	28	29	30	1	2
3	4Bulk Trash Section 1	5	6	7	8	9
10	11Bulk Trash Section 2	12	13	14	15	16
17	18Bulk Trash Section 3	19	20	21	22	23
24	Christmas City Offices Closed No Solid Waste Collection 25Bulk Trash Section 4	26	27	28	29	30
31	Happy New Year! 1	2	3	4	5	6

## From the Heart

From the Heart (FTH) is a unique partnership of Glendale residents, the city of Glendale, and local community agencies. FTH puts your donation to work every day. Whether serving meals to the elderly, giving emergency help to homeless families, or supporting abused children, FTH gives to non-profit agencies that provide services to our community. Since FTH began in 1997, more than \$2.5 million have been raised and distributed to non-profit agencies serving Glendale residents. Donate today! For more information, visit <https://bit.ly/GlendaleAZFTH>.

## Burn Cleaner, Burn Better

Keep our air clean and our neighbors healthy, don't burn wood on a No Burn Day! Convert your wood burning fireplace to natural gas or electric, or switch to other cleaner-burning alternatives. Relax by the glow of a warm fire while reducing harmful smoke pollution. To find out the latest air quality forecast and No Burn Day status, download the Clean Air Mobile App, visit [www.CleanAirMakeMore.com](http://www.CleanAirMakeMore.com) each day, or call 602-506-6400.

## How Does Your Water Use Stack Up?

The average residential water use in Glendale is approximately 106 gallons per person per day. You can calculate your daily water use by looking at your Glendale water bill, which shows your water use in thousands of gallons each month. For example, 9 = 9,000 gallons.

Gallons used each month	÷	People in household	÷	Days per month	=	Gallons per person per day
9,000 Gallons	÷	3 People	÷	30 Days	=	100 Gallons

## Save Water and Lower Your Sewer Fee

Did you know that your water use billed in January, February, and March is used to calculate your annual sewer fee? Starting in December, reduce your water use during these winter months to lower your sewer charge.

Follow these easy tips to lower your monthly water bill:

- Fix leaky toilets, faucets, and showerheads.
- Fix irrigation and pool leaks.
- Adjust your irrigation schedule monthly.

If you have a leak or fill your pool during the sewer average period, you can appeal your sewer charge. For more information, visit [www.glendaleaz.com/watersewertrashbilling](http://www.glendaleaz.com/watersewertrashbilling).

