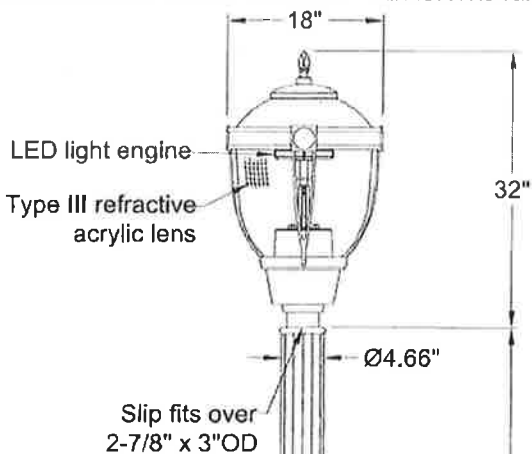


**PART STRING**

AP1302.125.TF6.125-12/ANC-BA.75-COUP/AP1300-BA-SKIRT/D701/AC-T3/AVI-SY-4H/BLK

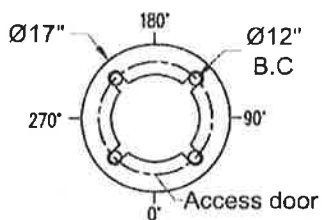


Slip fits over  
2-7/8" x 3"OD

Ø4.66"

32"

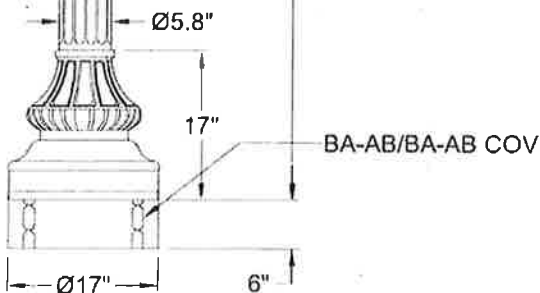
12'



(4) 3/4"-10NC Galv. Stl. Anchor Bolts,  
AASHTO M314-90 Grade 55, 4-1/4" Of  
Threaded End Galv. Per ASTM A153.

**POLE DETAILS**

Shaft  
Ø5.8"- Ø4.66" Fluted Aluminum .125 Wall  
#6063-T6 Aluminum  
Base  
Cast Aluminum (356-T6 Alloy)



BA-AB/BA-AB COV

Approved By DAVID R. GONZA Date 3-12-18

NOTICE: THIS DRAWING IS FOR REFERENCE ONLY. CHECK FOR LATEST REVISION PRIOR TO ORDERING. THIS DRAWING SHOULD ACCOMPANY YOUR ORDER. THANK YOU



[www.amerluxexterior.com](http://www.amerluxexterior.com)

3450 S.SAM HOUSTON PARKWAY  
E. SUITE 400 HOUSTON, TX. 77047  
PHONE:(281)997-5400 FAX:(281) 997-5441  
TOLL FREE: (800) 364-0098

**DATE**

3/23/2017

**QUOTE#/SO#**

539721

**JOB NAME:**

CITY OF ARLINGTON NEW YORK AVE

**LIGHT DISTRIBUTION**

TYPE III DISTRIBUTION

**FINISH**

BLK Smooth satin black

POLYESTER POWDER COAT

**VOLTAGE**

- 120     277     120-277V  
 208     MULTITAP     SPECIFY  
 240     480

**LIGHT SOURCE**

- HPS      
 MH      
 INDUCTION      
 LED      
 OTHER

**FILE NAME**

CITY OF ARLINGTON NEW YORK AVE\_539721.dwg

**DRAWN BY**

JM

**REVISION**

1

**NOTES**



**GENERAL:**

EXTERIOR HARDWARE WILL BE STAINLESS STEEL.  
ELECTRICAL COMPONENTS WILL BE ETL LISTED "SUITABLE FOR WET LOCATIONS."