



Meet Your Local Provider for Clean Power

PRESENTED BY: DANIEL KELLY

DATE: NOVEMBER 8, 2018

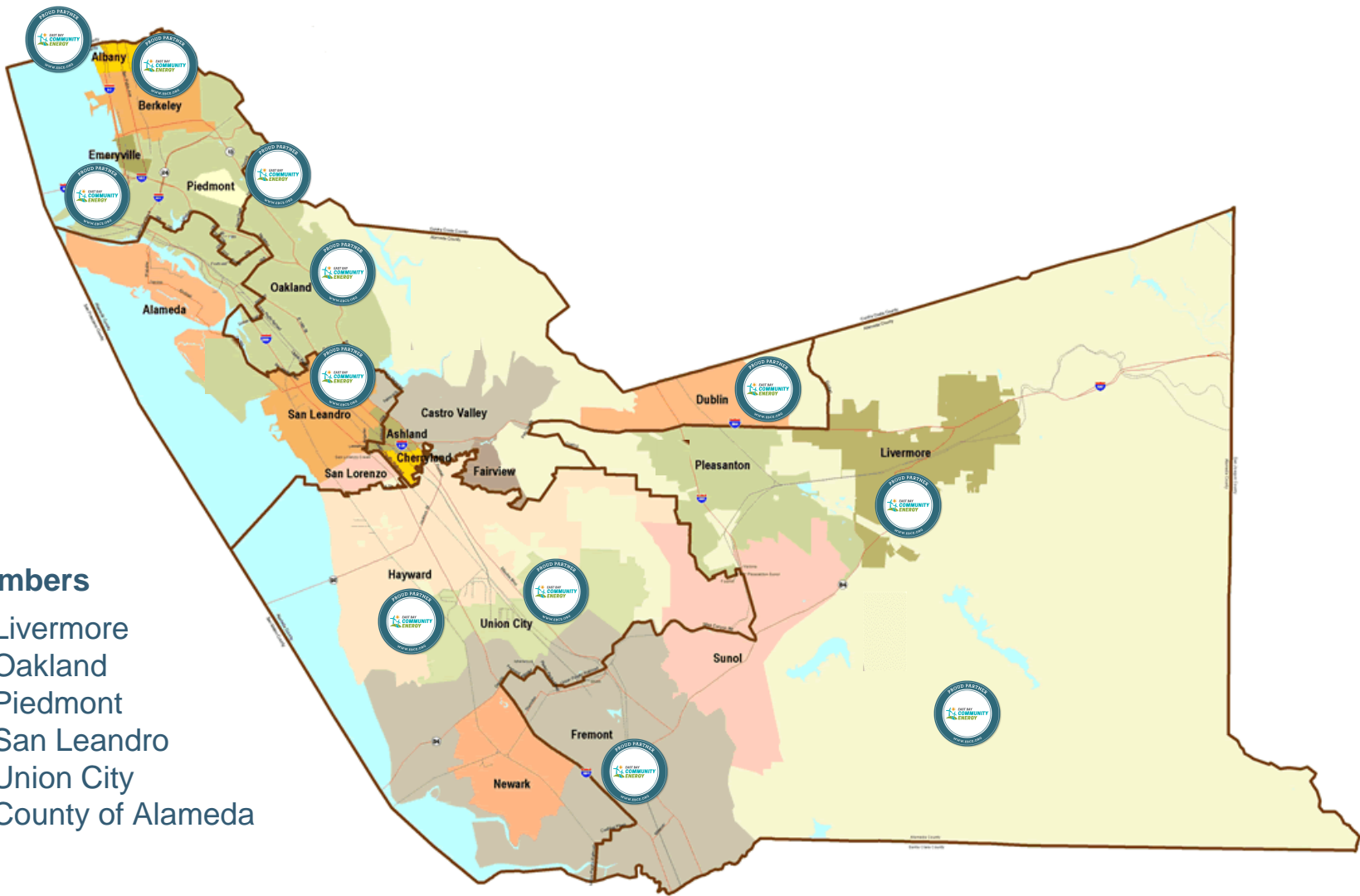
WHAT IS EBCE?



East Bay Community Energy (EBCE) is our new local power supplier committed to providing Alameda County with cleaner, greener electricity at lower rates. EBCE will reinvest earnings back into the community to create local green energy jobs, local energy programs, and clean power projects.

HISTORY IN BRIEF

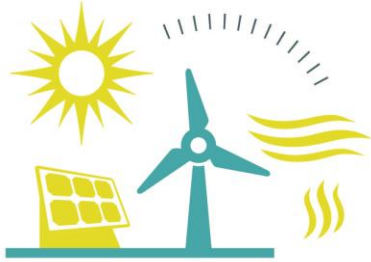




EBCE Members

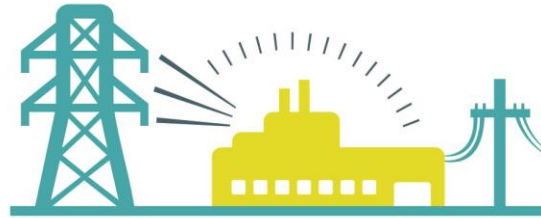
- | | |
|------------|-------------------|
| Albany | Livermore |
| Berkeley | Oakland |
| Dublin | Piedmont |
| Emeryville | San Leandro |
| Fremont | Union City |
| Hayward | County of Alameda |

HOW IT WORKS



Source
EBCE

buy and build cleaner
energy



Delivery
PG&E

deliver energy, repair lines,
handle billing



Customer
YOU

benefiting from cleaner energy,
local control

WHAT ABOUT MY CURRENT ELECTRICITY PROVIDER?

	What's New	What's the Same
Receive 1 bill each month		✓
Call PG&E to report outages and to start/stop service		✓
Net Metering (Solar Customers)		✓
CARE, FERA and Medical Baseline Allowance discounts		✓
PG&E employee discount		✓
Competitive pricing	✓	
More carbon-free energy	✓	
Choice of energy providers	✓	
Lower greenhouse gas emissions	✓	
A Brighter Future	✓	

WILL I HAVE A CHOICE?

- You will be **automatically enrolled**, but can change your service by
 - Calling 1-833-699-EBCE (3223) to talk to a representative
 - Monday through Friday from 7 AM to 7 PM
 - Call 24/7 and use the automated phone system
 - Go online at ebce.org
- You can choose one of EBCE's services or opt out to receive power from PG&E

	Bright Choice	Brilliant 100	Renewable 100	PG&E	PG&E SolarChoice
Average Monthly Bill (\$)	90.60	91.22	94.99	91.22	98.77

Based on average monthly usage for a residential customer on an E1 rate

WHAT ARE MY OPTIONS?



lower carbon

than PG&E

lower rates

than PG&E



100%

clean energy

same rate

as current PG&E price



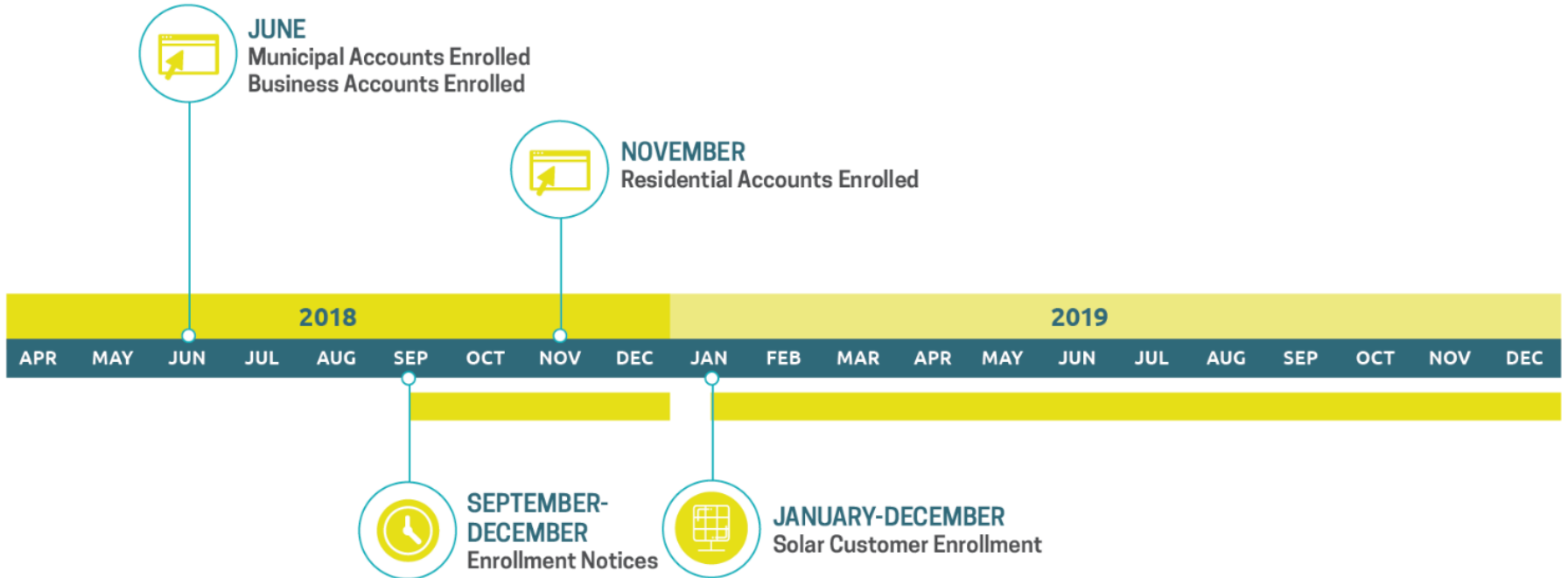
100%

renewable

\$0.01/kWh

more than Brilliant 100

WHEN WILL EBCE SERVICE BEGIN?



WHAT ARE THE BENEFITS?



LOWER
RATES



LOCAL
INVESTMENT



SUSTAINABILITY



CUSTOMER
CHOICE

Local Development Business Plan

Energy Efficiency: working with BayREN to evaluate ways to leverage EBCE's customer usage data and customer relationships to significantly improve targeting of energy efficiency incentives for residential customers

Building Electrification: joined the Building Electrification Initiative, a stakeholder driven effort to develop comprehensive strategies to promote the transition from gas to electricity in buildings

Transportation Electrification: held preliminary meetings with a school district in Alameda County to evaluate how EBCE can provide technical assistance to support their effort to adopt electric school buses

MuniFIT Update: EBCE staff is working with City of Hayward to develop a pathway forward for a 1.5 MW local solar project

Community Shared Solar: started engaging with the California Public Utilities Commission as they start to implement their Community Solar for Disadvantaged Communities incentive program

Community Net Metering: evaluating Net Metering aggregation as part of the Oakland Clean Energy Initiative (OCEI)

Utility Scale Renewables in +Alameda County: evaluating bids into EBCE's CA Renewables RFP. EBCE has a target to procure 20 MWs of Alameda County renewables through this RFP.

Enhanced Net Metering: working to operationalize and promote NEM adders for CARE customers and municipal customers

PROVEN CONCEPT...



*Not all towns/cities within a county are served by the local Community Choice Energy agency. Please visit individual agency websites for more detailed service area information.

HOW CAN I STAY UP TO DATE?

1. Join our email list
2. Follow us on social media
3. Attend a public meeting
4. Attend an event with EBCE





THANK YOU!



EBCE.org



[/EastBayCommunityEnergy](https://www.facebook.com/EastBayCommunityEnergy)



[@PoweredbyEBCE](https://twitter.com/PoweredbyEBCE)



customer-support@ebce.org



833.699.EBCE (3223)