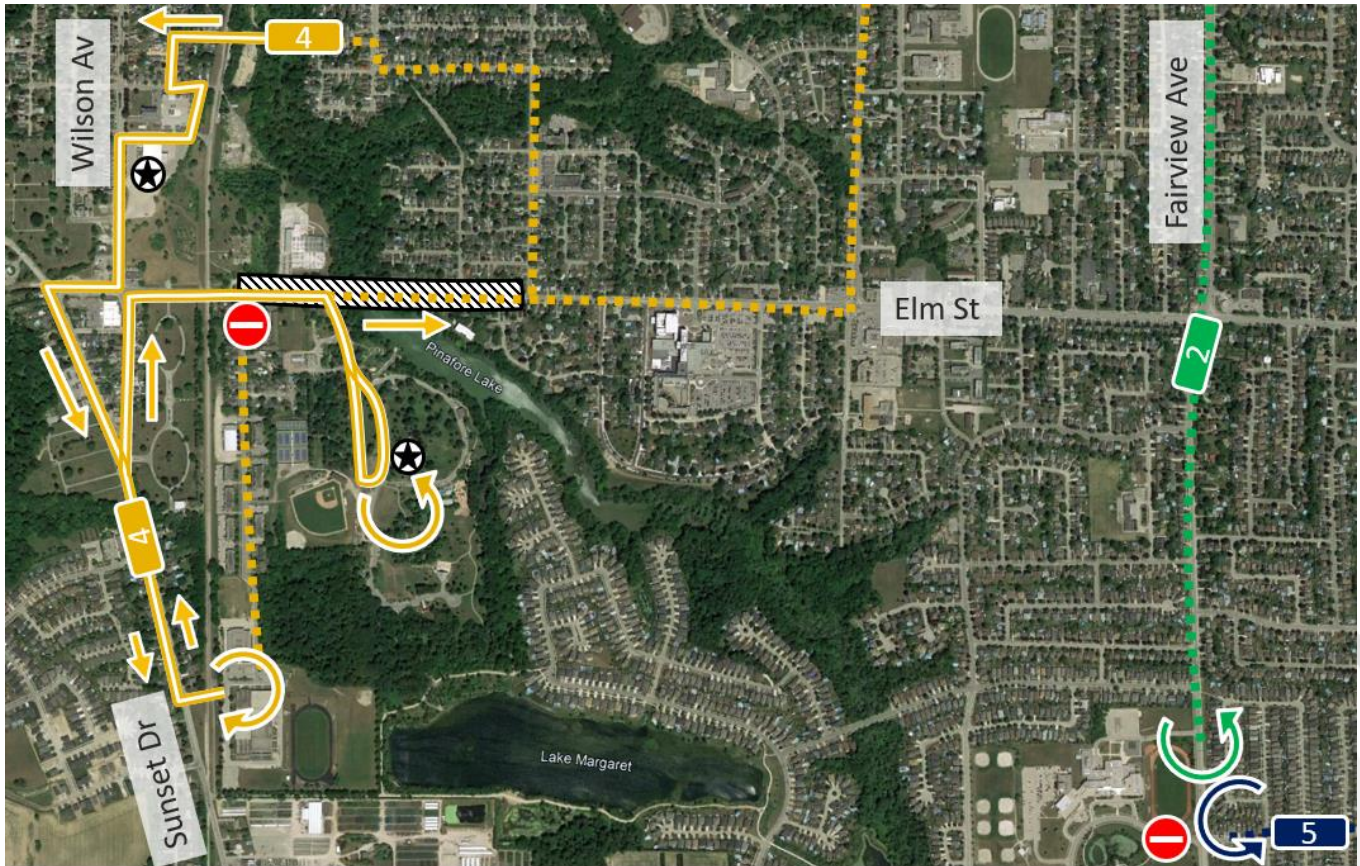


Route 4 (Parkside), Route 2 (Hospital) & Route 5 (Fanshawe)
Detour Notice, Friday Sept 23 to Sunday Sept 25

Due to special events on Friday Sept 23 through Sunday Sept 25, Railway City Transit will be detouring Route 4, 2 & 5.

Friday Sept 23 through Sunday Sept 25, Route 4 will be detoured into Memorial Arena Parking lot and Pinafore Park to assist the Summer Harvest Festival. Additionally on the morning of Sunday Sept 25, Route 4 will detour around Parkside Drive due to Railway City Road Races and Route 2 and 5 will turn around using the roundabout on Fairview due to the event preventing access to Fanshawe.



Route 4 Existing	Route 4 Detour	Temporary Stop
Route 2 Existing	Route 5 Existing	Reduces Lanes

The following bus stops will be relocated on Friday Sept 23, Saturday Sept 24, Sunday Sept 25.

Route 4 – Parkside (Stop Relocation)

- #410 – Chester at Wilson to Memorial Parking Lot (near south doors)
- #418 – Elm at Pinafore Park to Pinafore Park (Dance Pavilion)

The following bus stops will be out of service during Sunday Sept 25:

Route 4 – Parkside (Stop Closure)

- #416 – Parkside at Pinafore
- #417 – Parkside at Bell

Route 2 & Route 5 (Stop Closure)

- #212/513 – Fanshawe College

Service should return to regular routing on Monday Sept 26th. The City appreciates your flexibility and understanding in the matter.

For any further information about Railway City Transit please visit our webpage.
https://www.stthomas.ca/living_here/transit_system