

PACIFIC MEADOWS P.U.D.

STREET TREE and OPEN SPACE PLAN

5th Ave SW

5th Ave SE



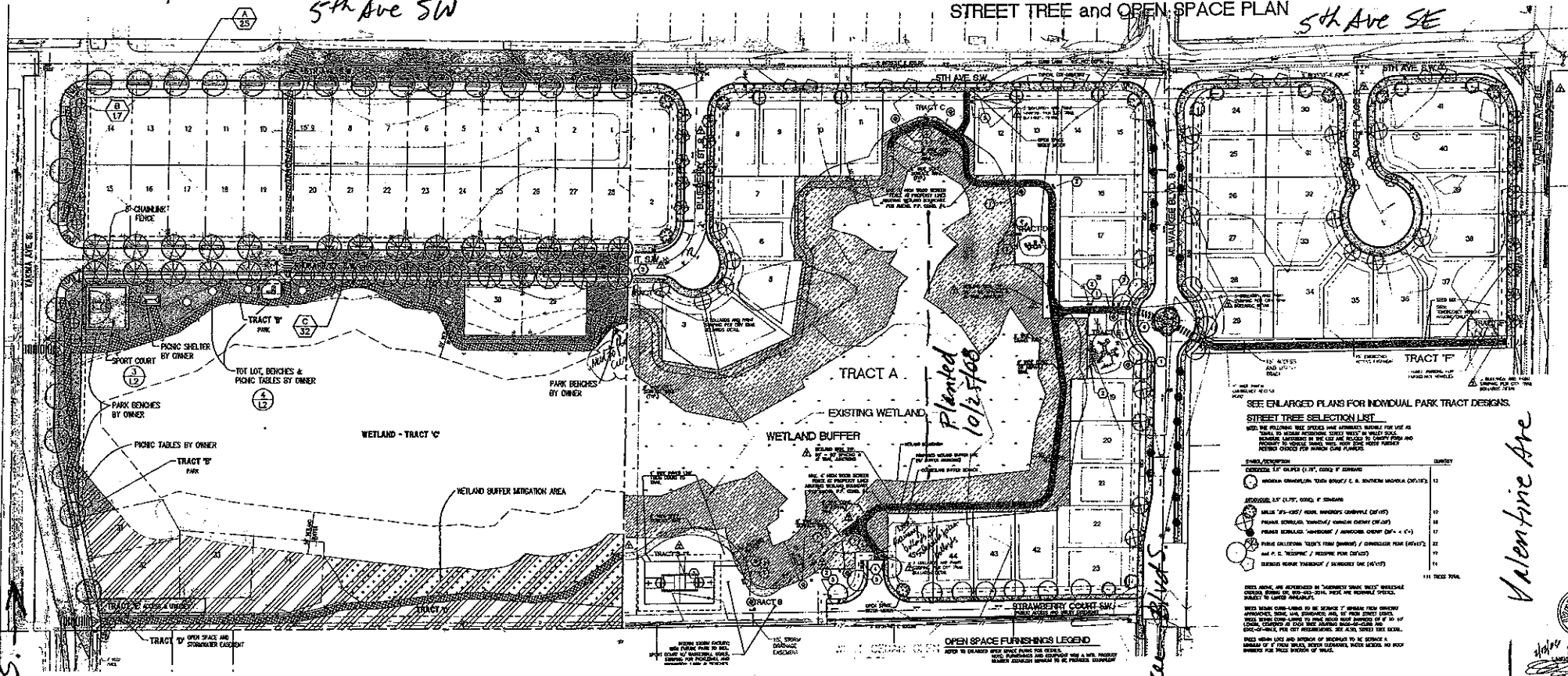
TO Pacific City Hall

← Yakima Ave. S.

← Milwaukee Blvd S.

Valentine Ave

← To Stewart Rd & SR 167



SEE ENLARGED PLANS FOR INDIVIDUAL PARK TRACT DESIGNS.

STREET TREE SELECTION LIST

WITH THE FOLLOWING TREE SPECIES AND APPROXIMATE QUANTITIES FOR USE IN

TRACTS TO BE PLANTED. QUANTITIES LISTED ARE BASED ON THE FOLLOWING ASSUMPTIONS:

1. ALL TREES TO BE PLANTED IN THE LOT AND PLANTED BY CONTRACTOR AND

PROTECTED BY FENCE AND WATERED FOR ONE YEAR AFTER PLANTING.

2. TREES TO BE PLANTED IN THE LOT AND PLANTED BY CONTRACTOR AND

PROTECTED BY FENCE AND WATERED FOR ONE YEAR AFTER PLANTING.

3. TREES TO BE PLANTED IN THE LOT AND PLANTED BY CONTRACTOR AND

PROTECTED BY FENCE AND WATERED FOR ONE YEAR AFTER PLANTING.

4. TREES TO BE PLANTED IN THE LOT AND PLANTED BY CONTRACTOR AND

PROTECTED BY FENCE AND WATERED FOR ONE YEAR AFTER PLANTING.

5. TREES TO BE PLANTED IN THE LOT AND PLANTED BY CONTRACTOR AND

PROTECTED BY FENCE AND WATERED FOR ONE YEAR AFTER PLANTING.

6. TREES TO BE PLANTED IN THE LOT AND PLANTED BY CONTRACTOR AND

PROTECTED BY FENCE AND WATERED FOR ONE YEAR AFTER PLANTING.

7. TREES TO BE PLANTED IN THE LOT AND PLANTED BY CONTRACTOR AND

PROTECTED BY FENCE AND WATERED FOR ONE YEAR AFTER PLANTING.

8. TREES TO BE PLANTED IN THE LOT AND PLANTED BY CONTRACTOR AND

PROTECTED BY FENCE AND WATERED FOR ONE YEAR AFTER PLANTING.

9. TREES TO BE PLANTED IN THE LOT AND PLANTED BY CONTRACTOR AND

PROTECTED BY FENCE AND WATERED FOR ONE YEAR AFTER PLANTING.

10. TREES TO BE PLANTED IN THE LOT AND PLANTED BY CONTRACTOR AND

PROTECTED BY FENCE AND WATERED FOR ONE YEAR AFTER PLANTING.

11. TREES TO BE PLANTED IN THE LOT AND PLANTED BY CONTRACTOR AND

PROTECTED BY FENCE AND WATERED FOR ONE YEAR AFTER PLANTING.

12. TREES TO BE PLANTED IN THE LOT AND PLANTED BY CONTRACTOR AND

PROTECTED BY FENCE AND WATERED FOR ONE YEAR AFTER PLANTING.

13. TREES TO BE PLANTED IN THE LOT AND PLANTED BY CONTRACTOR AND

PROTECTED BY FENCE AND WATERED FOR ONE YEAR AFTER PLANTING.

14. TREES TO BE PLANTED IN THE LOT AND PLANTED BY CONTRACTOR AND

PROTECTED BY FENCE AND WATERED FOR ONE YEAR AFTER PLANTING.

15. TREES TO BE PLANTED IN THE LOT AND PLANTED BY CONTRACTOR AND

PROTECTED BY FENCE AND WATERED FOR ONE YEAR AFTER PLANTING.

16. TREES TO BE PLANTED IN THE LOT AND PLANTED BY CONTRACTOR AND

PROTECTED BY FENCE AND WATERED FOR ONE YEAR AFTER PLANTING.

17. TREES TO BE PLANTED IN THE LOT AND PLANTED BY CONTRACTOR AND

PROTECTED BY FENCE AND WATERED FOR ONE YEAR AFTER PLANTING.

18. TREES TO BE PLANTED IN THE LOT AND PLANTED BY CONTRACTOR AND

PROTECTED BY FENCE AND WATERED FOR ONE YEAR AFTER PLANTING.

19. TREES TO BE PLANTED IN THE LOT AND PLANTED BY CONTRACTOR AND

PROTECTED BY FENCE AND WATERED FOR ONE YEAR AFTER PLANTING.

20. TREES TO BE PLANTED IN THE LOT AND PLANTED BY CONTRACTOR AND

PROTECTED BY FENCE AND WATERED FOR ONE YEAR AFTER PLANTING.

21. TREES TO BE PLANTED IN THE LOT AND PLANTED BY CONTRACTOR AND

PROTECTED BY FENCE AND WATERED FOR ONE YEAR AFTER PLANTING.

22. TREES TO BE PLANTED IN THE LOT AND PLANTED BY CONTRACTOR AND

PROTECTED BY FENCE AND WATERED FOR ONE YEAR AFTER PLANTING.

OPEN SPACE FURNISHINGS LEGEND

REFER TO ENLARGED OPEN SPACE PLANS FOR DETAILS.

NOTE: DIMENSIONS AND QUANTITIES ARE A MIN. PROPOSED

QUANTITIES SUBJECT TO BE PROVIDED BY CONTRACTOR.

1. 10' x 10' WOODEN BENCH

2. 10' x 10' WOODEN TABLE

3. 10' x 10' WOODEN SHED

4. 10' x 10' WOODEN CABINET

5. 10' x 10' WOODEN CHAIR

6. 10' x 10' WOODEN STOOL

7. 10' x 10' WOODEN BENCH WITH TABLE

8. 10' x 10' WOODEN BENCH WITH TABLE AND CHAIR

9. 10' x 10' WOODEN BENCH WITH TABLE AND STOOL

10. 10' x 10' WOODEN BENCH WITH TABLE AND CABINET

11. 10' x 10' WOODEN BENCH WITH TABLE AND CHAIR AND STOOL

12. 10' x 10' WOODEN BENCH WITH TABLE AND CABINET AND STOOL

13. 10' x 10' WOODEN BENCH WITH TABLE AND CHAIR AND CABINET

14. 10' x 10' WOODEN BENCH WITH TABLE AND STOOL AND CABINET

15. 10' x 10' WOODEN BENCH WITH TABLE AND CHAIR AND STOOL AND CABINET

16. 10' x 10' WOODEN BENCH WITH TABLE AND CABINET AND STOOL AND CHAIR

17. 10' x 10' WOODEN BENCH WITH TABLE AND CHAIR AND STOOL AND CABINET

18. 10' x 10' WOODEN BENCH WITH TABLE AND STOOL AND CABINET AND CHAIR

19. 10' x 10' WOODEN BENCH WITH TABLE AND CHAIR AND STOOL AND CABINET

20. 10' x 10' WOODEN BENCH WITH TABLE AND CABINET AND STOOL AND CHAIR

21. 10' x 10' WOODEN BENCH WITH TABLE AND CHAIR AND STOOL AND CABINET

22. 10' x 10' WOODEN BENCH WITH TABLE AND STOOL AND CABINET AND CHAIR

23. 10' x 10' WOODEN BENCH WITH TABLE AND CHAIR AND STOOL AND CABINET

24. 10' x 10' WOODEN BENCH WITH TABLE AND CABINET AND STOOL AND CHAIR

25. 10' x 10' WOODEN BENCH WITH TABLE AND CHAIR AND STOOL AND CABINET

26. 10' x 10' WOODEN BENCH WITH TABLE AND STOOL AND CABINET AND CHAIR

27. 10' x 10' WOODEN BENCH WITH TABLE AND CHAIR AND STOOL AND CABINET

28. 10' x 10' WOODEN BENCH WITH TABLE AND CABINET AND STOOL AND CHAIR

29. 10' x 10' WOODEN BENCH WITH TABLE AND CHAIR AND STOOL AND CABINET

30. 10' x 10' WOODEN BENCH WITH TABLE AND STOOL AND CABINET AND CHAIR