



Celebrate San Ramon's History

LIMERICK PARK

In the mid 1800s, San Ramon was known as “Limerick” due to the Irish settlers living in the area. The Irish settlers named the area now known as San Ramon “Limerick” in honor of the ancient and noble county in Ireland named County Limerick. County Limerick sits at the entrance to the mouth of the Shannon River. Vikings arrived in the middle of the 9th century and built the town Limerick City. Normans built a castle in the 12th century. In the early 1800s, there was a large scale emigration to the United States and Irish emigrants joined many other settlers looking for a new life in California.

San Ramon was called “Limerick” for several decades until the arrival of the San Ramon Branch Line of the Southern Pacific Railroad in 1891. The name “Limerick” was then permanently changed to San Ramon.

The City of San Ramon encourages our residents to enjoy this beautiful park named in celebration of our continuing rich and diverse cultural history.

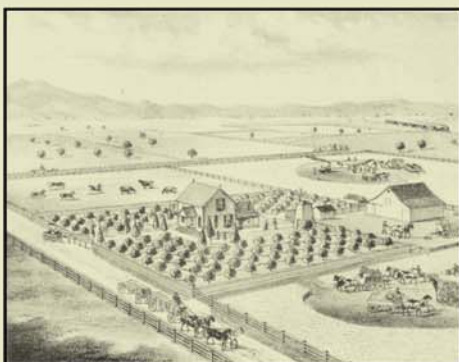
All artwork courtesy of the Museum of the San Ramon Valley.



*RESIDENCE OF DAVID GLASS,
APPROXIMATE 1840-1850 (MUSEUM OF THE SAN RAMON VALLEY)*



San Ramon Stagecoach



George McCamley Residence, San Ramon



San Ramon Depot