



Technical Specifications

Dougherty Valley Performing Arts Center

10550 Albion Rd
San Ramon, CA 94582

Table of Contents

About the Theater.....	2
Contact Information.....	3
Stage Dimensions.....	3
Technical Staff.....	4
Load In.....	4
Stage Flooring.....	5
Stage Rigging.....	5
Line Set Schedule.....	6
Lighting.....	7
Sound.....	8
Projections.....	9
Communications.....	9
Chairs and Tables.....	9
Piano.....	10
Podium.....	10
Platforms.....	10
Special Effect Guidelines.....	10
Wi-Fi.....	11
Video Recording.....	11
Live Streaming.....	11
Rehearsal Studio.....	12
Production Meeting.....	13
Parking Map.....	14
Lighting Plot.....	15



About the Theater:

Dougherty Valley Performing Arts Center (DVPAC)

10550 Albion Rd, San Ramon, CA 94582

Located on the Dougherty Valley High School Campus

Website: SanRamonPerformingArts.com

The Dougherty Valley Performing Arts Center is a modern 587 seat theatre with professional lighting and sound capabilities. Our on-site theater management company is experienced in all types of theatrical and event productions. The Center also has a 3,500 square foot rehearsal room, dressing rooms, and box office. Patrons are welcomed into the theatre with granite flooring and rich mahogany trim. The spacious venue features comfortable seating with excellent stage viewing. Ideal for your next performance or corporate gathering.

Contact Information

Lin Dennis

Theater Manager

ldennis@sanramon.ca.gov

925.973.3345

Zephyrn Avila

Technical Director

zavila@sanramon.ca.gov

925.973.3344

Stage Dimensions

Grid Height: 23'

Cyclorama Wall: 15'6" height x 44'6" width

Proscenium Width: 39'6"

Proscenium Height: 15'8"

Proscenium to Cyc Wall: 26'6"

Lighting Booth to Cyc Wall: 92'

Stage Height from Pit: 4'4"

Orchestra Pit: 8' depth x 12' width x 35' length = 420 square feet

Dressing Room #1: 19'5" d x 11'4" w

Dressing Room #2: 20'9" d x 10'6" w

Technical Staff

A Production Manager, Lighting Technician, and Sound Technician will be available for the full duration of your rental. Additional technicians are available upon request with an additional fee. Technical Staff arrives 30 minutes prior to the rental to unlock the facility and warm up the systems and 30 minutes after the rental to cleanup and lockup. The half hour prior to arrival and after you leave are included in labor hours for your rental. DVPAC always tries to schedule the same technical staff for both the rehearsal and performance times of the rental.

Load In



Loading Dock Height: Street Level

Door Height: 8'11"

Door Width: 7'10"

The loading dock is located on the right side of DVPAC (see Parking Map)

Stage Flooring

- Painted Black Masonite flooring
- Marley Dance Floor (Black) is available for rental; additional charge plus labor applies
- Please note that nails, screws, bolts, staples or any other fasteners are not allowed in the stage floor
- Tape is permitted (Gaff, vinyl, spike, glow)

Stage Rigging

- There is NO fly system. All battens are dead hung at 23'
- Main, Mid, and Upstage Travelers operate on stage right.
- Main Curtain is Navy Blue
- Black and White Scrim are available
- There are 8 empty battens available
- All rigging must be discussed and approved by the Technical Director during the production meeting.
- While scenery is being hung, nobody except for DVPAC staff is allowed on stage

**Please note that the DVPAC Cyclorama is a wall and NOT a curtain*

DVPAC BATTEN SCHEDULE		
Line Set	Use	Remarks
1	EMPTY	Interferes with DS Catwalk lights.
2	1 st Legs	
3	Projector Screen	
4	Projector Screen	
5	EMPTY	
6	1 st Electric	
7	EMPTY	Center interferes with mirror ball.
8	Mid-Stage Traveler	
9	Black Scrim	
10	EMPTY	
11	2nd Electric	
12	EMPTY	
13	3 rd Legs	
14	White Scrim	
15	EMPTY	
16	EMPTY	Lighting fixtures are hung on the far sides.
17	3 rd Electric	
18	Border	
19	Up-Stage Traveler	
20	EMPTY	
	*Battens are 23ft above the stage	<i>Revised on 06/23/19</i>

Lighting

Standard Lighting plot

- Front Light: Source Four front wash (Warm, Cool, No Color)
- Down Light: 18 LED Color Source Pars
- Cyc Light: 3 color Cyc lights (Red, Blue, Amber)
- High Sides: Source Four (Pink, Yellow)
- Specials and Gobos: lights available for specials and gobos in various places on stage

**See page 15 for light plot*

Specialty Lighting (additional fees apply)

- Mirror Ball (with motor)
- Lighting Booms/Trees (up to 4 on each side of the stage)
- Cyc Ground Row (4 across); Red, Green, Blue
- *Wildfire LT-400F* Black Lights (x4)
- *Lycian Super Arc 400* Follow Spots (x2)

Lightboard: ETC Ion XE + Fader Wing

Gel and Gobos

- Gels and Gobos are available upon request
- Requests for Gels and Gobos must be made by time of production meeting
- There is no guarantee of color selection or exact gobos
- Clients are welcome to bring gobos or precut gel for their event

Sound

Sound Reinforcement System

- Mains & Delays: EAW MK Series
- Subwoofers: EAW SB 180ZP
- FOH Mixer: Yamaha M7CL-48

Microphones

- Wireless Handhelds (x6)
- Wireless Lavalier packs Shure ULXD1 (x13)
- Wired Handheld Mics: SM58 (x10)
- Hanging Choir Mics (x3)
- Floor Boundary Mics (x2)

**List of all other mics available upon request*

Stage Monitors

- EV ZX1-90B (x4)
- JBL AC2826 (x4)

All audio playback must be on client's device (laptop, iPad, etc.) or provided via USB and must be controlled by DVPAC crew.

**DVPAC uses QLab for playback. Please number files (01-100 etc). in show order.*

Preshow safety announcement must be read from a script by an MC or played from a prerecorded file that DVPAC has.

Preshow music/intermission music must also be provided on a client device or a USB drive.

Projector

BARCO F90-4K13

(11,800 lumens, 4k UHD, DLP Laser Phosphor Projector)

Projecting Surfaces: Cyc Wall or Motorized Projector Screen

Connections: HDMI and VGA connections in lighting booth, VGA connection on Stage Left

All video playback must be provided on the same USB as tracks and numbered or on client's laptop and must be controlled by a client volunteer. Please provide the needed adaptors for laptop to work with DVPAC's projection system.

(HDMI or VGA and 3.5mm for audio output)

Communications

Clear-Com intercom stations are located throughout the theater; including sound booth, lighting booth, follow spot booth, and backstage (left and right)

Chairs and Tables

Tables are available for use in crossover, offstage, studio, lobby, and outside (up to 10 total).

There is always a table on each side backstage for props, costumes, etc.

Padded Chairs (Blue) are available for use in the orchestra pit and lobby. Plastic Chairs (Black) are available for use in the studio, backstage, and dressing rooms.

Piano

Yamaha GH1 Baby Grand Piano

Additional fees apply for usage and tuning

Podium

Wide Rolling Podium (Black) available

Desk light, mic stand, and audio input are available on podium if requested ahead of time.

Platforms

4'x8' Wooden Risers (Black)

- 18¾ inch height (x3)
- 12¾ inch height (x2)

Special Effect Guidelines

The use of the following effects is NOT allowed

- Smoke/Haze/Fog machines
- Bubble/Snow Machines
- Open flames (of any kind)
- Confetti/Streamers
- Glitter
- Spraying or Splashing Water onstage

Wi-Fi

The only Wi-Fi network available at DVPAC is the school Wi-Fi from Dougherty Valley High School. It has proven to be slow and unreliable for show critical needs. We suggest the use of a mobile hotspot for important internet needs (some phones can send off a mobile hotspot signal).

Video Recording

Professional Video Recording is allowed for events. The videographer can set up tripods in the last row of the center section of the auditorium. Power and a direct audio feed (XLR only) can be supplied from DVPAC. All video recording plans must be communicated by the time of the production meeting. Retail Photography Fees apply.

Live Streaming

For several events at DVPAC, live streaming the performance is a feature that many clients often want to pursue so family and friends from all over the world can virtually attend the event. Due to the speed of the Wi-Fi in the venue, a mobile hotspot MUST be brought by the client for live streaming to occur.

Suggestions for live streaming platforms are below.

- YouTube Live <https://www.youtube.com/howitworks/product-features/live>
- Facebook Live <https://www.facebook.com/help/1636872026560015>
- Vimeo Live <https://vimeo.com/features/virtual-events>

Rehearsal Studio

Dimensions: 71'7" deep x 47'10" wide



Additional use fee applies for each day studio is used

Rehearsal Studio Uses:

- Green Room Space
- Rehearsal Space
- Extra Dressing Rooms

Equipped with

- Sound System (Aux Input available)
- TV with live feed of stage
- Full body mirror (full depth of the room)
- Partitions to divide room into any configuration
- Costume Racks
- Tables and Chairs
- Large Garbage Cans

**All equipment is available upon request at production meeting*

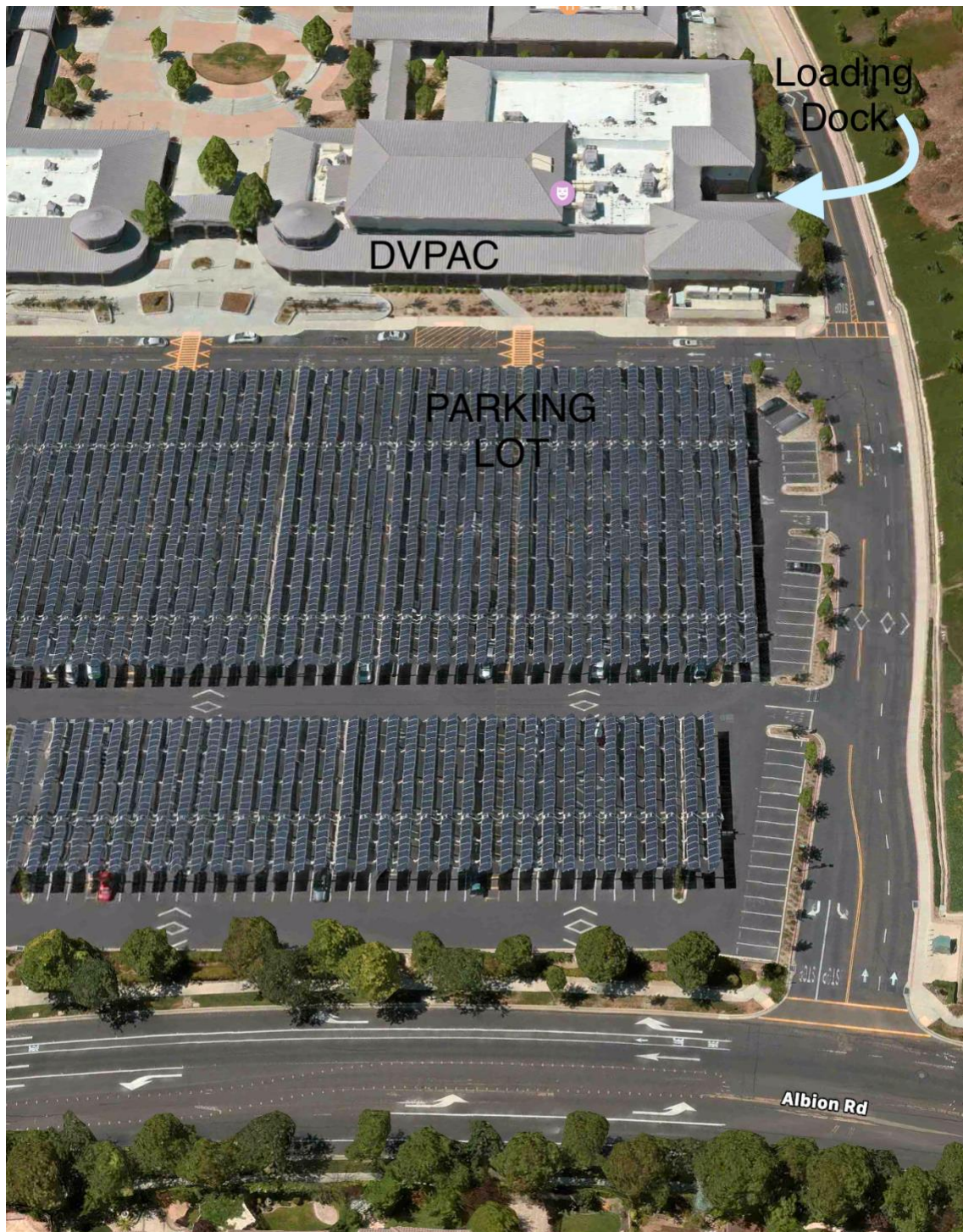
Production Meeting

A Production Meeting must be held for every event held at DVPAC. Essential planners for the event (no more than 4) will meet with the Theater Manager and Technical Director to discuss the following:

- Technical Needs
(Lighting, Sound, Projections, Stage Setup, Rigging)
- Front of House Needs
(Lobby Setup, Audience Attendance, Intermission Arrangements)
- Additional Setup
(Studio use, Dressing Room needs, Extra Backstage Setup)
- Schedule for the rental dates
(rehearsal days, Tech days, performance days)

Production meetings are usually held a month in advance so the rental client and DVPAC staff can do additional planning and preparation.

Parking Map



- All parking at DVPAC is free
- ADA Accessible Spaces Available

