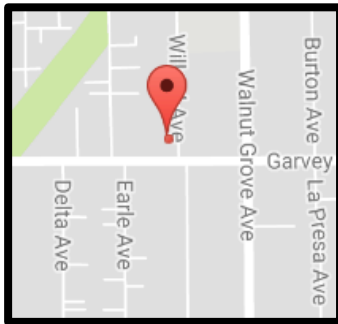


## New Garvey 168 Plaza

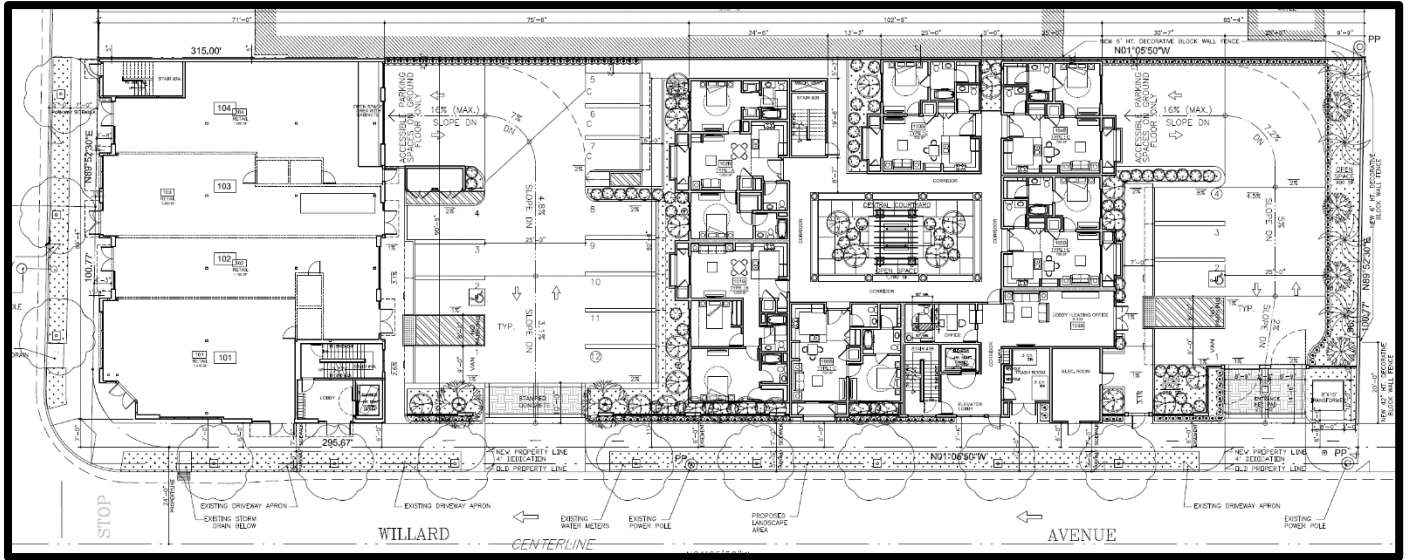
8479 Garvey Avenue (NWC Willard Avenue and Garvey Avenue)



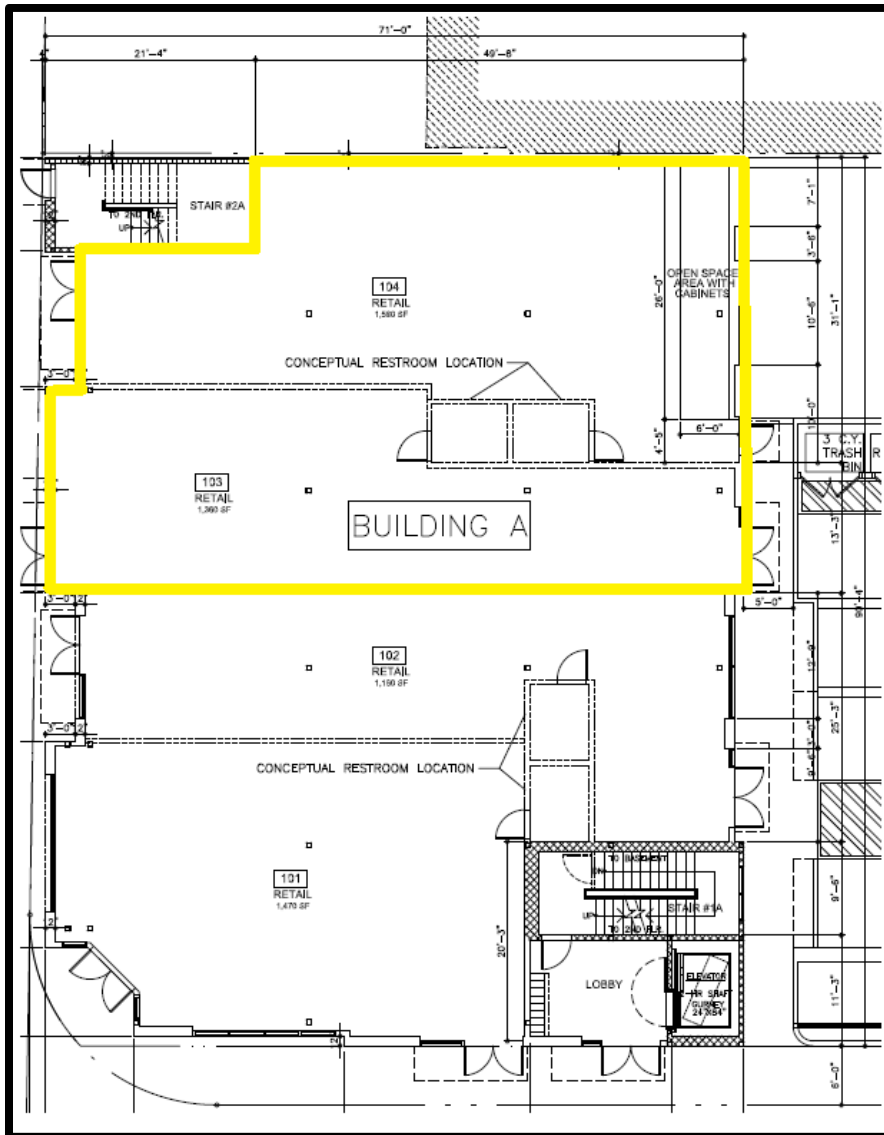
- 28 Residential Apartments
- Building A: 5,550 s.f. - Retail/Restaurant (First Floor)
- Building A: 4,750 s.f. - Office (Second Floor - 540 s.f. to 620 s.f.)
- 44 Commercial Parking Spaces (12 surface and 32 basement)

\*For more information, please contact the City of Rosemead Planning Division at (626) 569-2140.

# Site Plan



## Building A - Retail/Restaurant Floor Plan



Available  
(2,520 s.f.)

