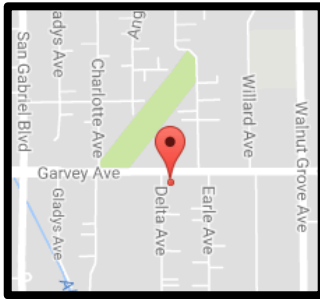


Garvey Garden Plaza

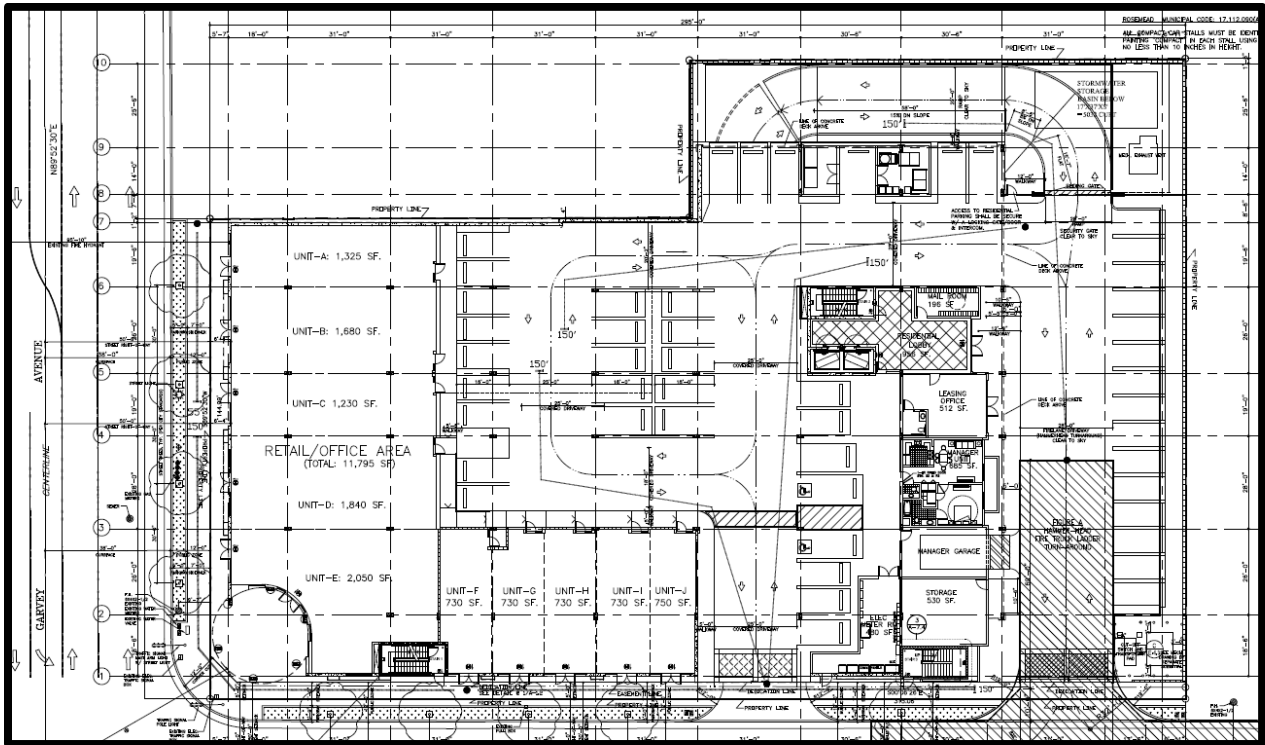
8408 Garvey Avenue (SEC Delta Avenue and Garvey Avenue)



- Under Construction
- Estimated Date of Completion - End of 2019 or Start of 2020
- 46 Residential Apartments
- 11,795 s.f. - Commercial (Retail/Office)
- 48 Commercial Parking Spaces

*For more information, please contact the City of Rosemead Planning Division at (626) 569-2140.

Site Plan



Commercial Floor Plan

